



SCPH-50000

# SCPH-50000 series

SERVICE MANUAL 2nd edition  
for GH-026 BOARD  
(I-chassis)

PlayStation.2



Sony Computer Entertainment Inc.  
Customer Service Department



### SAFETY CHECK-OUT

After correcting the original service problem, perform the following safety checks before releasing the set to the customer:

1. Check the area of your repair for unsoldered or poorly-soldered connection. Check the entire board surface for solder splashes and Bridge.
2. Check the interboard wiring to ensure that no wires are "pinched" or contact high-wattage resistors.
3. Look for unauthorized replacement parts, particularly transistors, that were installed during a previous repair. Point them out to the customer and recommend their replacement.
4. Look for parts which, through functioning, show obvious signs of deterioration. Point them out to the customer and recommend their replacement.
5. Check the line cord for cracks and abrasion. Recommend the replacement of my such line cord to the customer.
6. Check the B+ voltage to see it is at the values specified.
7. Check the metal trim, "metallized" knobs, screws, and all other exposed metal parts for AC leakage.

Check leakage as described below.

**CAUTION:**

The use of optical instrument with this product will increase eye hazard.

**CAUTION**

Use of controls or adjustments or performance of procedures other than those specified herein may result in hazardous radiation exposure.

**WARNINGII**

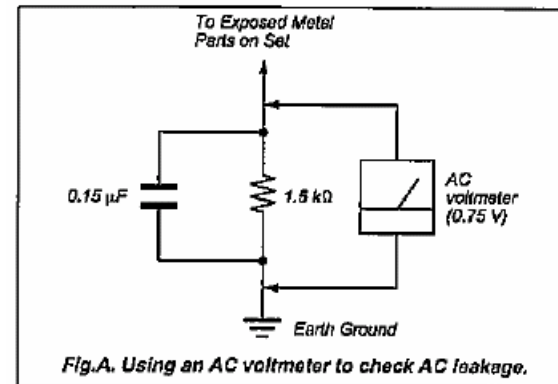
WHEN SERVICING, DO NOT APPROACH THE LASER EXIT WITH THE EYE TOO CLOSELY. IN CASE IT IS NECESARRY TO CONFIRM LASER BEAM EMISSION, BE SURE TO OBSERVE FROM A DISTANCE OF MORE THAN 25 cm FROM THE SURFACE OF THE OBJECTIVE LENS ON THE OPTICAL PICK-UP BLOCK.

**LEAKAGE TEST**

The AC leakage from any exposed metal part to earth ground and from all exposed metal parts to any exposed metal part having a return to chassis, must not exceed 0.5 mA (500 microampers.).

Leakage current can be measured by any one of three methods.

1. A commercial leakage tester, such as the Simpson 229 or RCA WT-540A . Follow the manufacturers' instructions to use these instruments.
2. A battery-operated AC milliammeter. The Data Precision 245 digital multimeter is suitable for the job.
3. Measuring the voltage drop across a resistor by means of a VOM or battery-operated AC voltmeter. The "limit" indication is 0.75V, so analog meters must have an accurate low-voltage scale. The Simpson 250 and Sanwa SH-63 Trd are examples of a passive VOM that is suitable. Nearly all battery operated digital multimeters that have a 2V AC range are suitable. (See Fig.A)



**SAFETY-RELATED COMPONENT WARNINGII**

COMPONENTS IDENTIFIED BY MARK OR DOTTED LINE WITH MARK ON THE SCHEMATIC DIAGRAMS AND IN THE PARTS LIST ARE CRITICAL TO SAFE OPERATION. REPLACE THESE COMPONENTS WITH SONY PARTS WHOSE PART NUMBERS APPEAR AS SHOWN IN THIS MANUAL .OR IN SUPPLEMENTS PUBLISHED BY SONY.

## Table of contents

### 1.CIRCUIT DIAGRAM

1-1.GH-026 Board(1-8)-----	1-2
1-2.GH-026 Board(2-8)-----	1-3
1-3.GH-026 Board(3-8)-----	1-4
1-4.GH-026 Board(4-8)-----	1-5
1-5.GH-026 Board(5-8)-----	1-6
1-6.GH-026 Board(6-8)-----	1-7
1-7.GH-026 Board(7-8)-----	1-8
1-8.GH-026 Board(8-8)-----	1-9
1-9.SW-414 Board-----	1-10

### 2.PRINTED WIRING BOARD

2-1.GH-026 Board (Side A)-----	2-1
2-2.GH-026 Board (Side B)-----	2-2

### 3.EXPLODED VIEWS

3-1.OVER AND MAIN BLOCK-----	3-1
3-2.MD BLOCK-----	3-2

### 4.ELECTRICAL PART LIST-----

9-1

## SECTION 1 CIRCUIT DIAGRAM

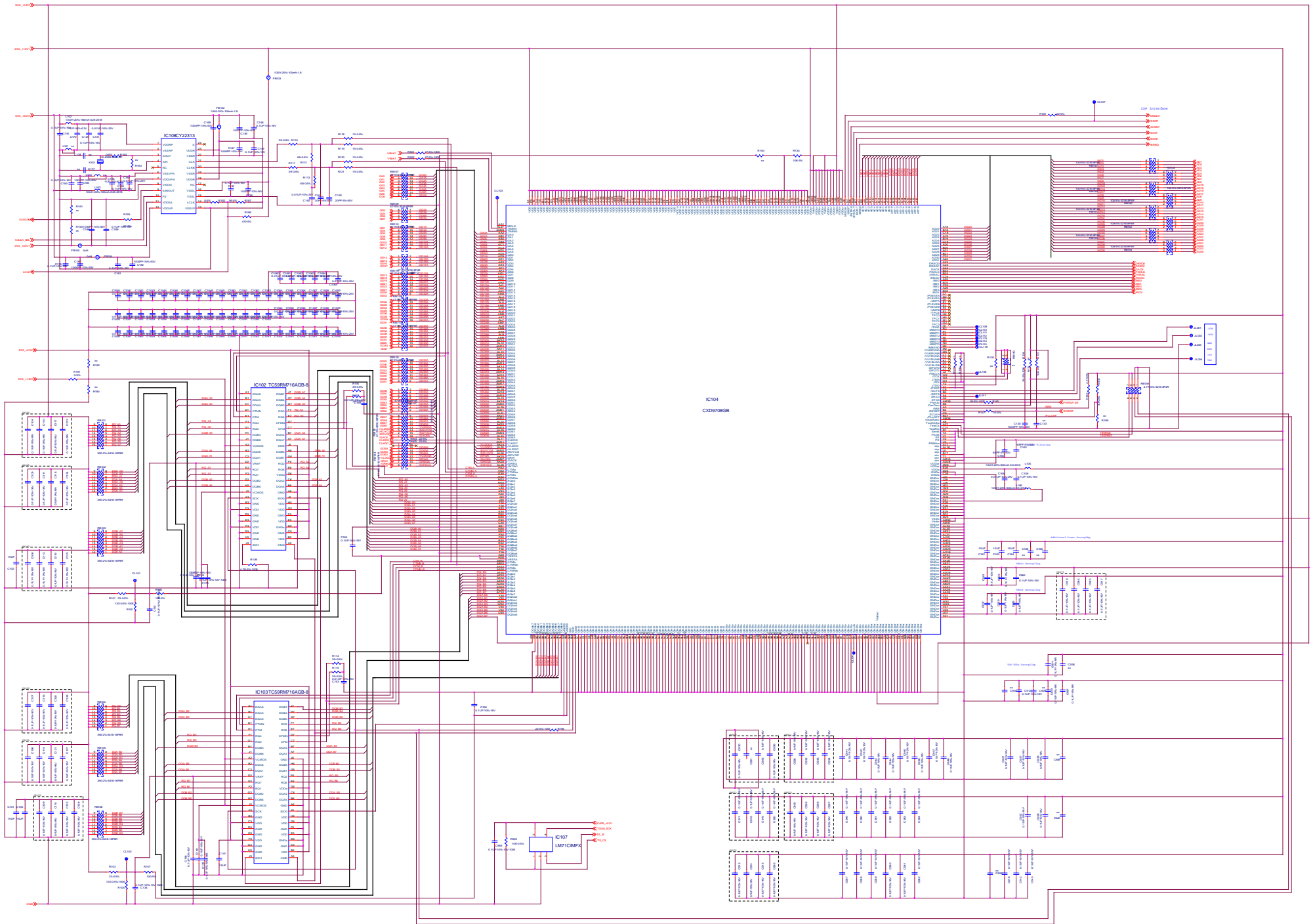
### Note on Circuit Diagrams

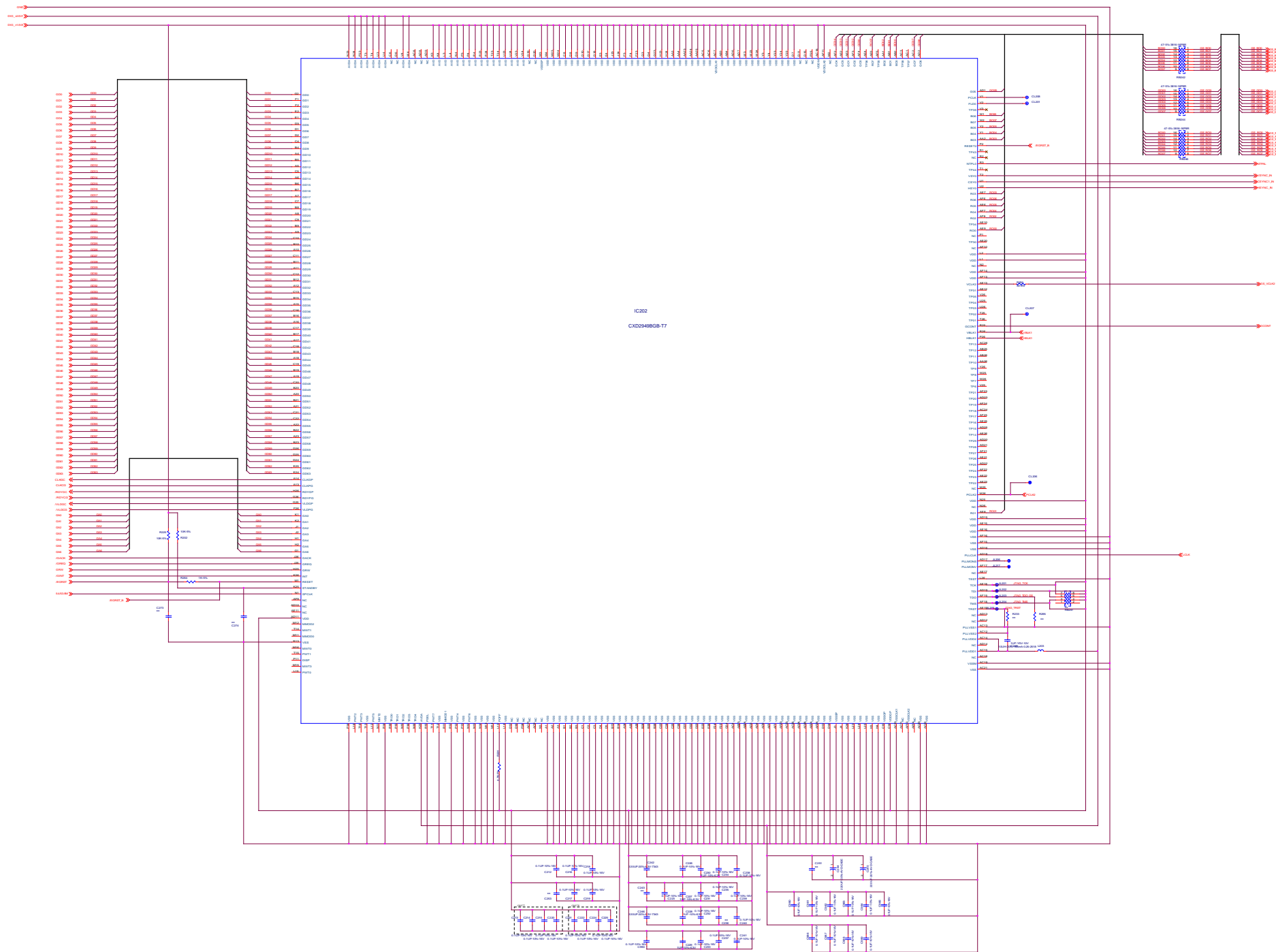
- All capacitors are in  $\mu$  F unless otherwise noted. pF:  $\mu$   $\mu$  F  
50WV or less are not indicated except for electrolytics  
and tantalums.
- All resistors are in  $\Omega$  and  $\frac{1}{4}$  W or less unless otherwise  
specified.
- % :indicates tolerance.

Note:

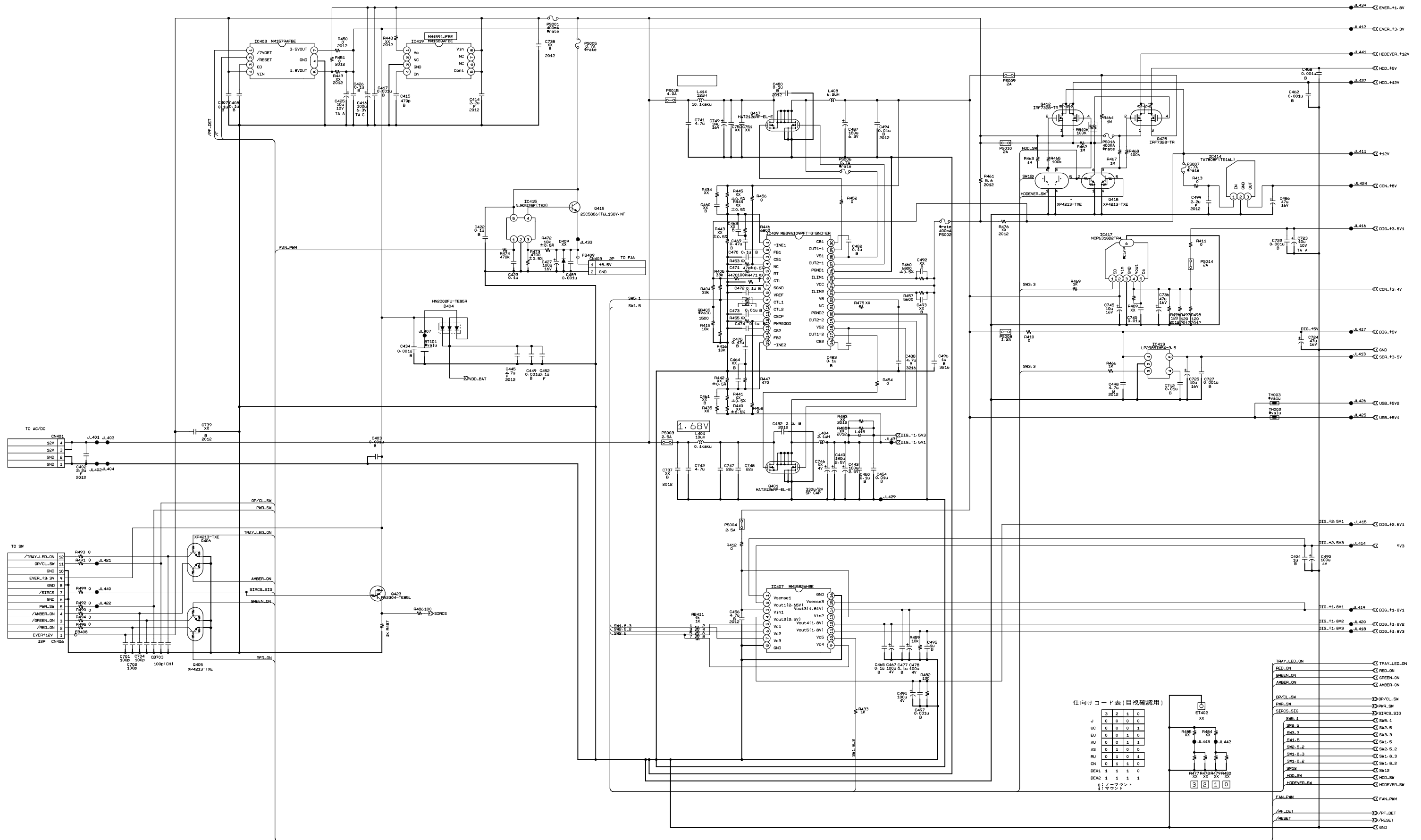
The components identified by mark  $\triangle$   
or dotted line with mark  $\triangle$  are critical  
for safety.

Replace only with part number specified.









R404	R405	R415	R416	R434	R435	R446	R447	R452	R454	R456	R457	R458	R460	R470	R475
MB39A109PFT	XX	XX	XX	XX	XX	13K	1800	0	0	0	1800	0	6800	100K	XX
SN105225DBTR	100K	100K	33K	33K	0	0	0	0	2.7	2.7	XX	12K	XX	12K	XX

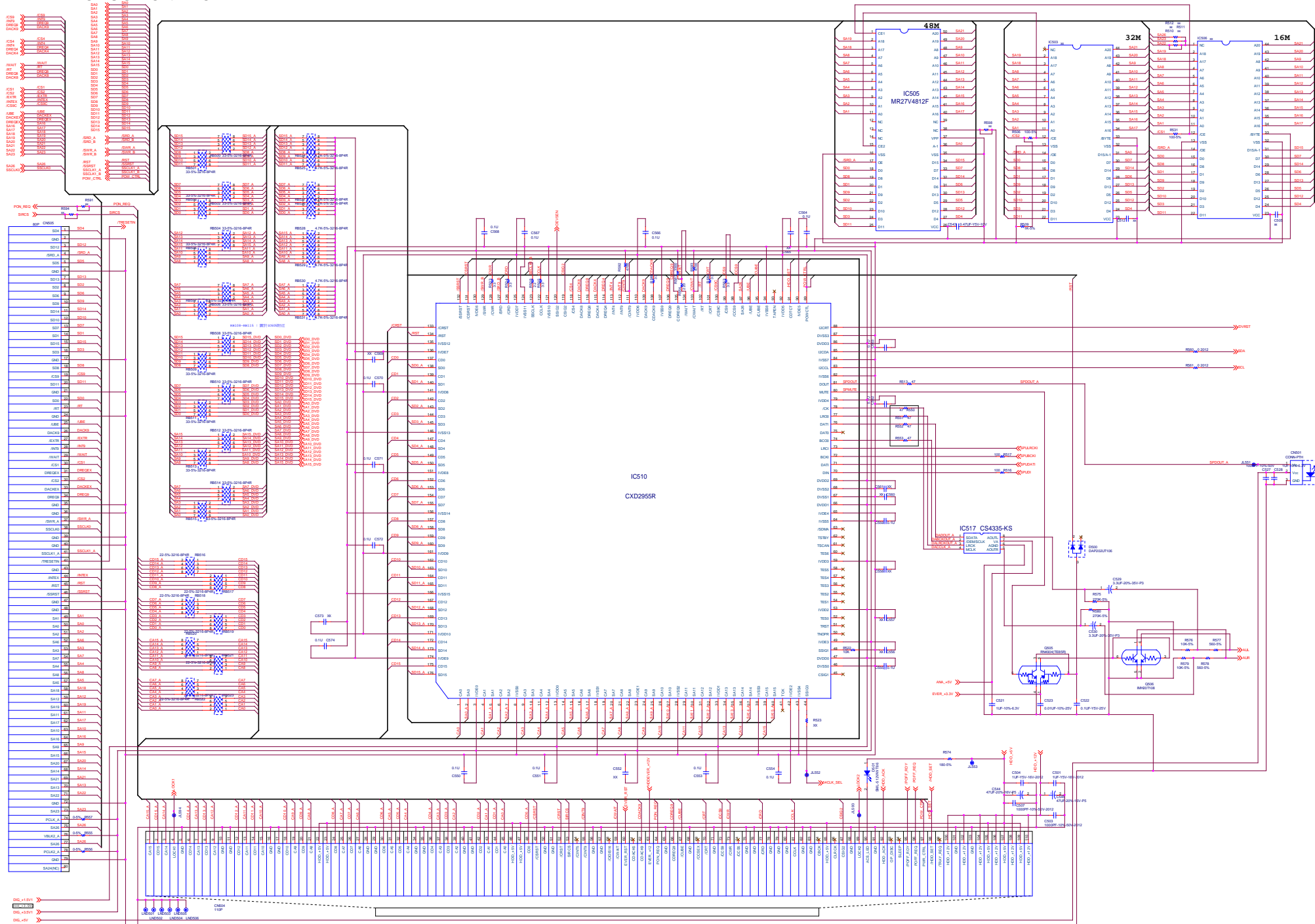
C475	C492	C493	C460	C461	C469	C471
MB39A109PFT	0.47u	XX	XX	XX	XX	0.47u
SN105225DBTR	470P	0.1u	0.1u	120P	820P	220P

ICLINK PS001.002.013.016:FCC16 401 AD or TF16SN 0.40 or ERBF0R40S  
 PS003.004:CCP2E63  
 PS005.006.007:FCC16 701 AD or TF16SN 0.70 or ERBF0R70S  
 PS008.012:CCP2E30 or ICP-S1.2  
 PS009.010.011.014:CCP2E50 or ICP-S2.3  
 PS015:CCP2E100 or FHC32 502 AD  
 THERMISTER TH001.002.003:miniSMDC100 or 1812L110PRT or MF-MSMF110

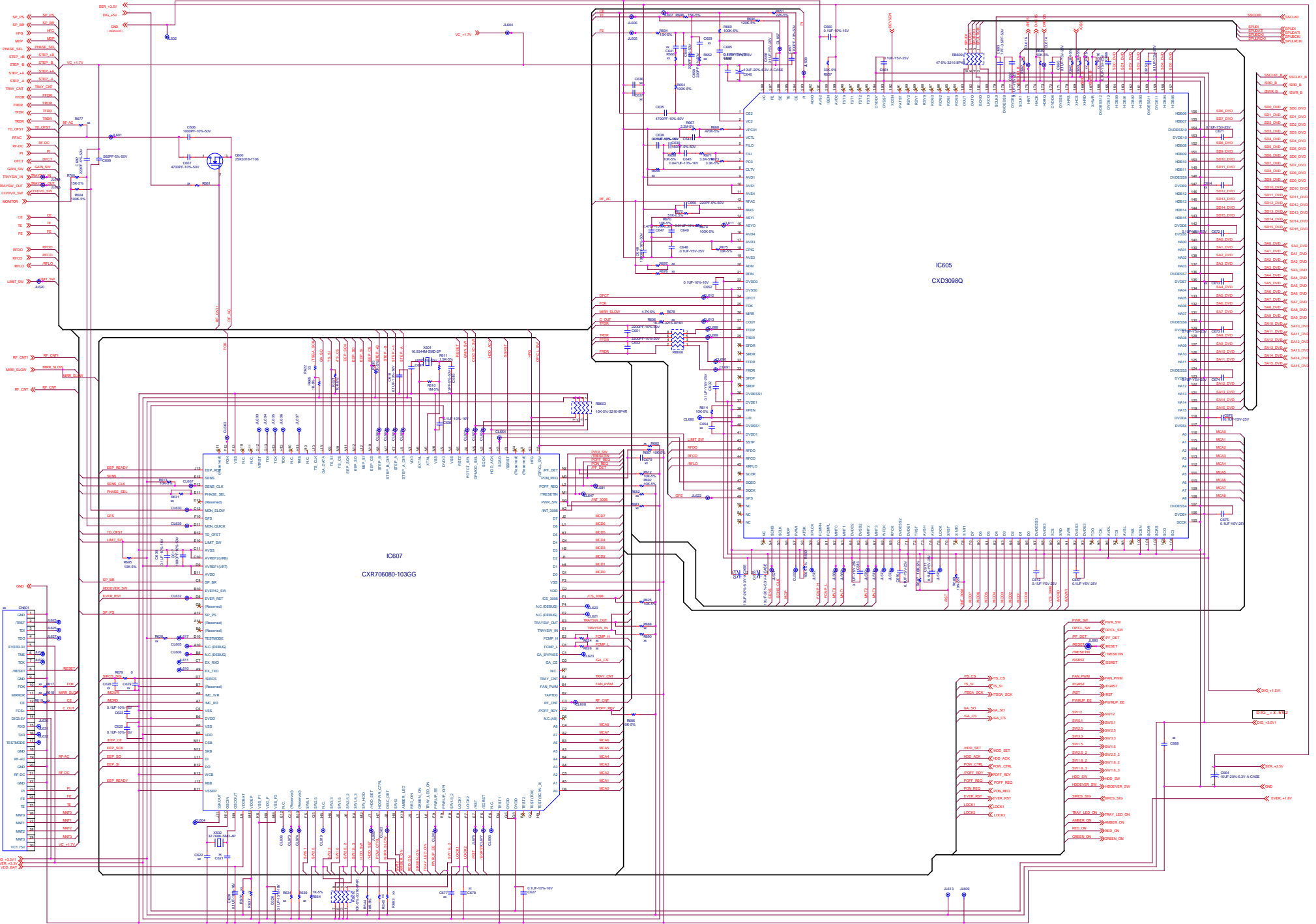
仕向けコード表(目視確認用)

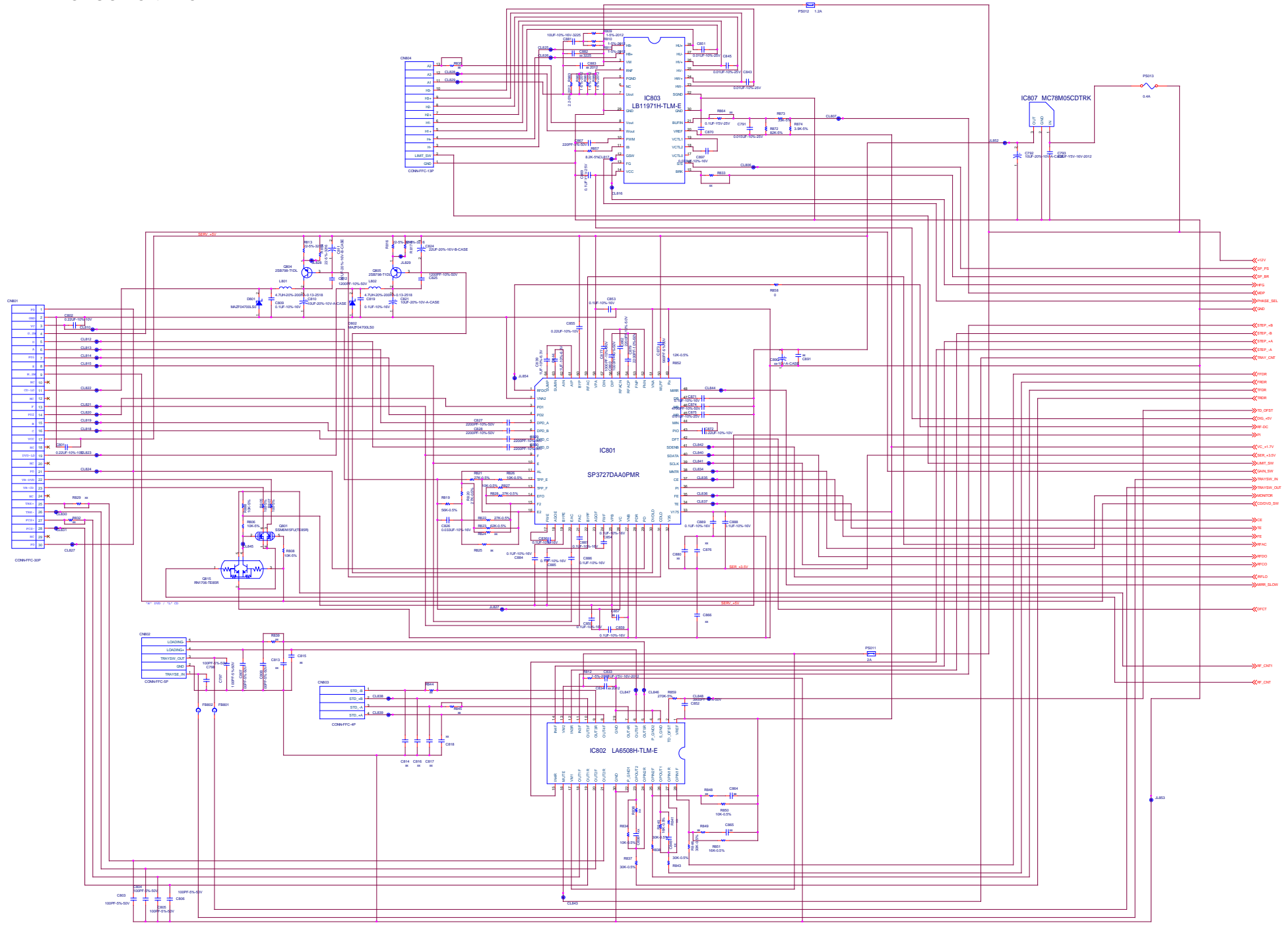
J	3	2	1	0
UC	0	0	0	0
EU	0	0	0	1
AU	0	0	1	1
AS	0	1	0	0
RJ	0	1	0	1
CN	0	1	1	0
DEX1	1	1	1	0
DEX2	1	1	1	1



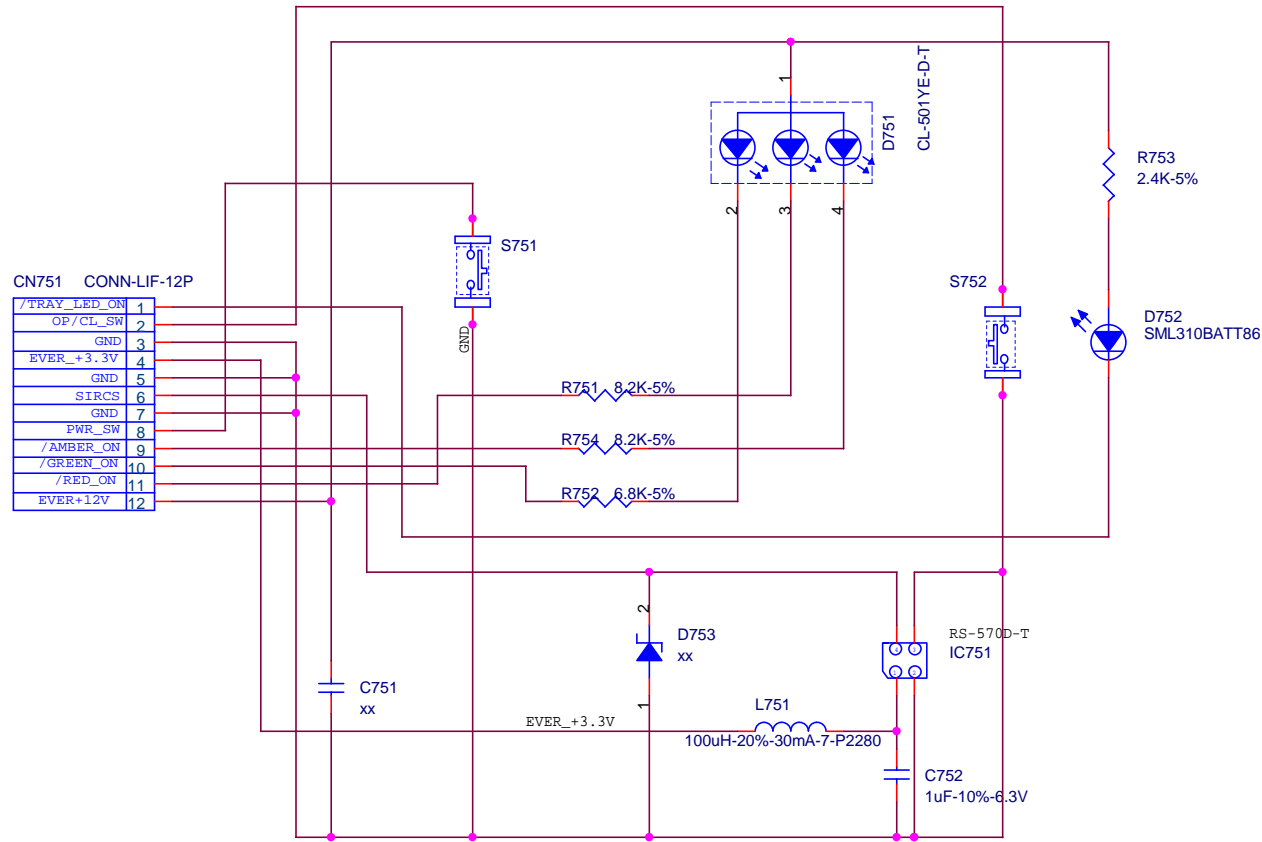


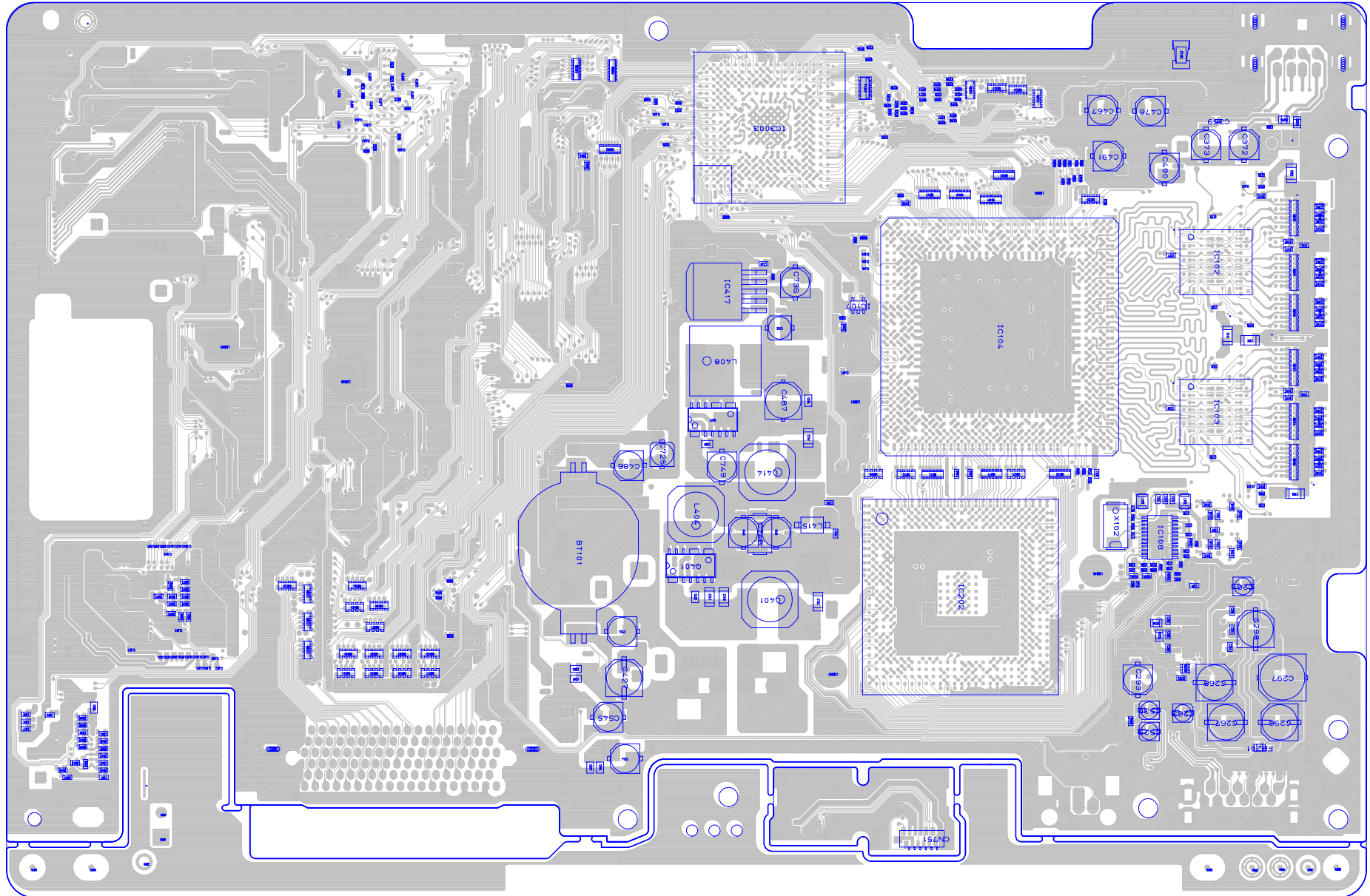
REPRODUCTION PROHIBITED

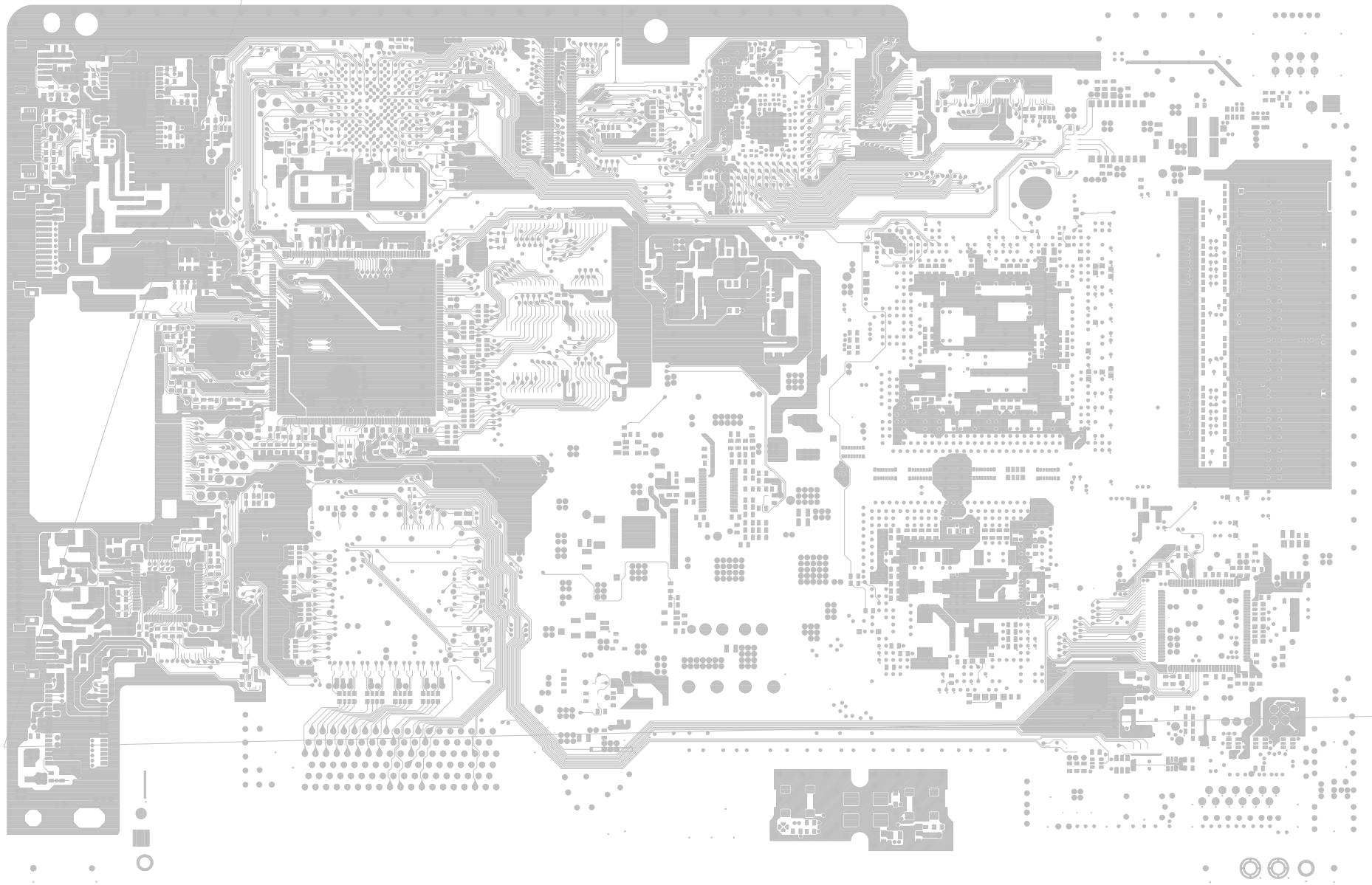






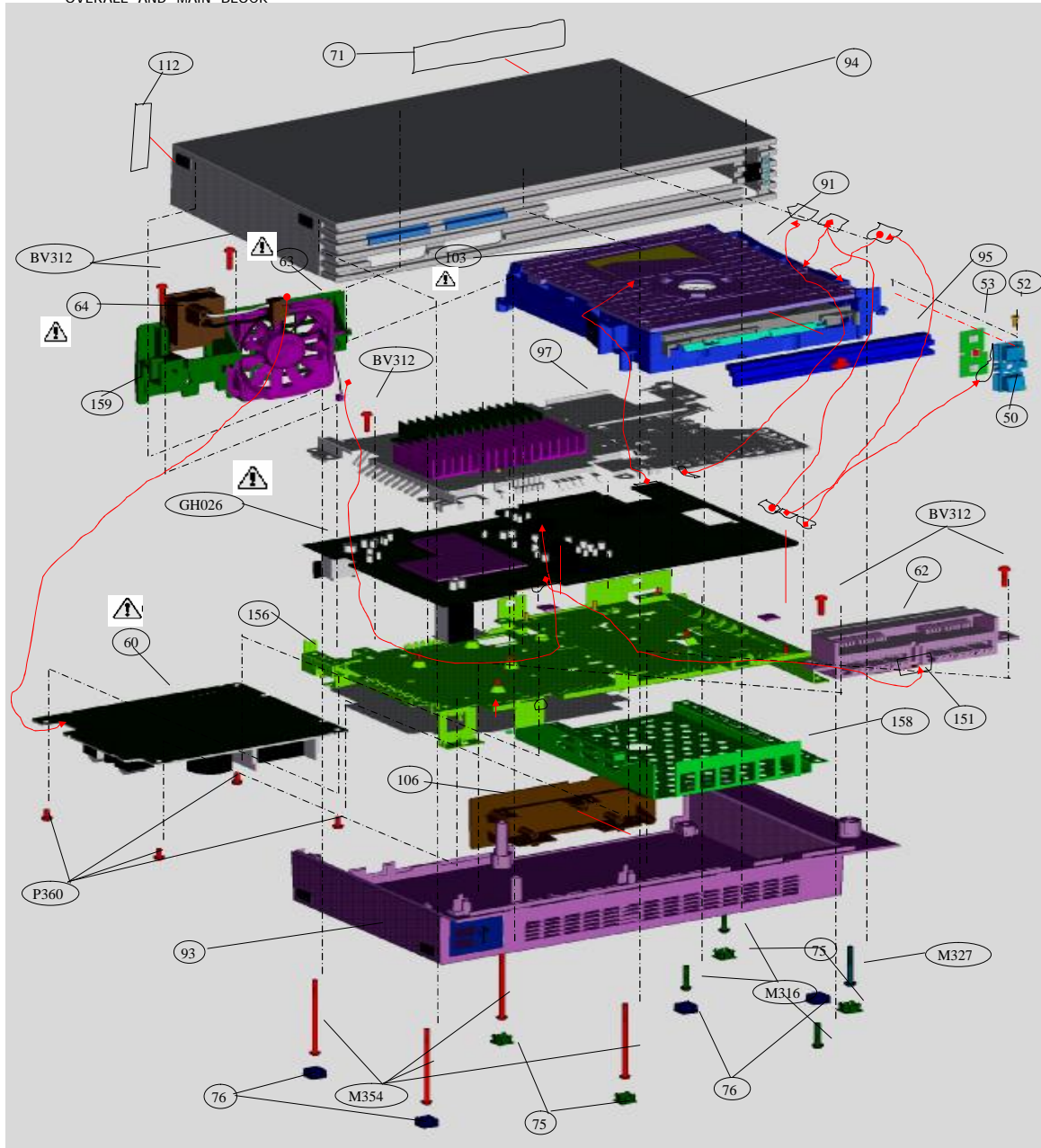








OVERALL AND MAIN BLOCK



EXPLODED VIEWS

CAUTION:

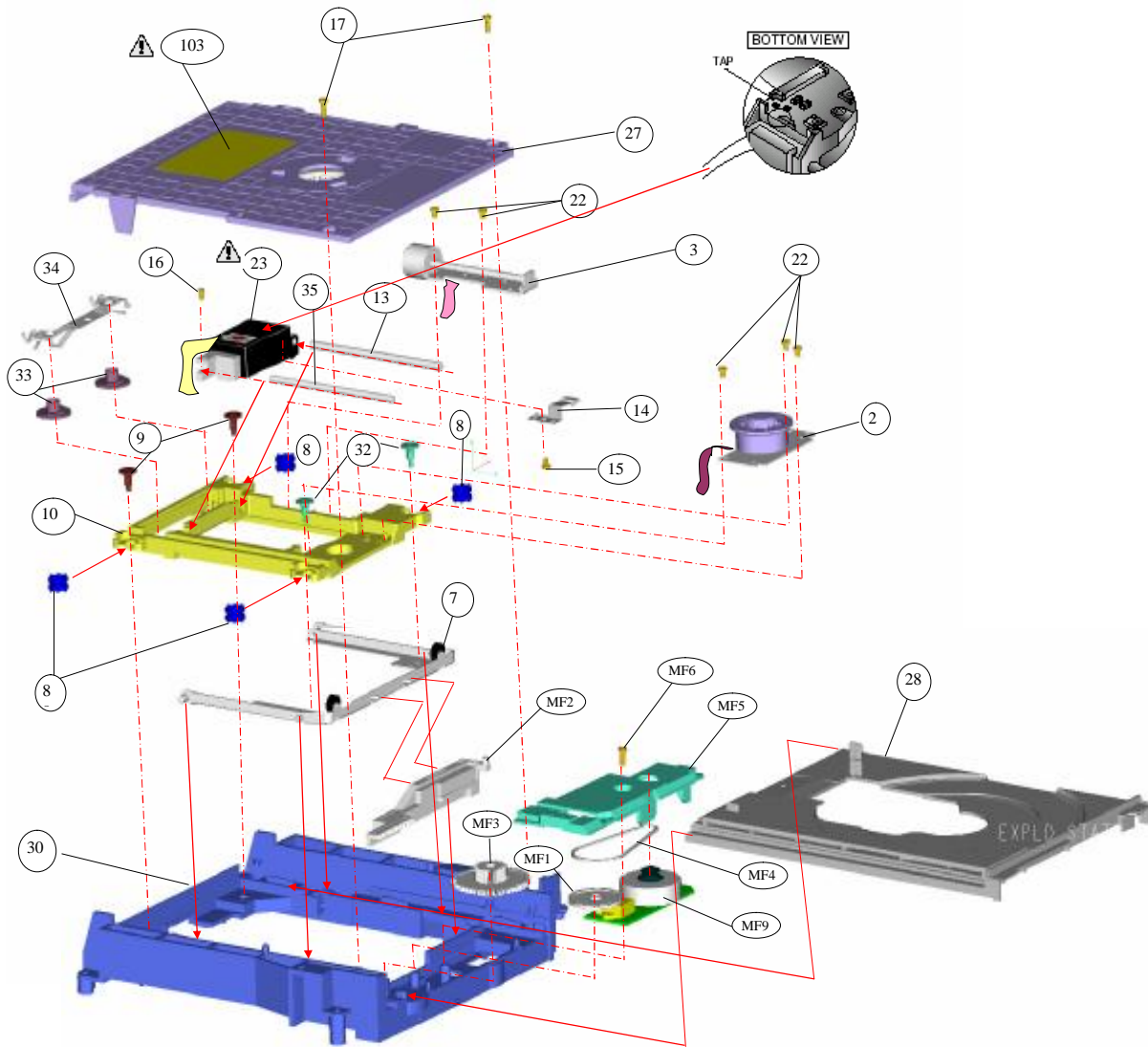
The components identified by mark  plotted line with mark..  italical for safety. Replace only with part number specified.



CAUTION :  
Use of controls or adjustments or performance of procedures other than those specified herein may result in hazardous radiation exposure.

OVERALL AND MAIN BLOCK

Ref-No	Part No	Description	Remark	Place code
	1-468-758-31	POWER BLOCK		
	1-468-758-41	POWER BLOCK		
	1-468-759-21	POWER BLOCK		
	1-468-760-11	POWER BLOCK		
	1-694-873-11	TERMINAL BOARD (FRONT)		
	1-694-874-12	TERMINAL BOARD (FRONT)		
	1-694-875-13	TERMINAL BOARD (FRONT)		
	1-694-875-21	TERMINAL BOARD (FRONT)		
	1-757-934-11	CABLE, FLEXIBLE FLAT (FFC-011)		
	1-757-934-21	CABLE, FLEXIBLE FLAT (FFC-011)		
	1-757-934-31	CABLE, FLEXIBLE FLAT (FFC-011)		
	1-757-934-42	CABLE, FLEXIBLE FLAT (FFC-011)		
	1-757-934-51	CABLE, FLEXIBLE FLAT (FFC-011)		
	1-757-934-61	CABLE, FLEXIBLE FLAT (FFC-011)		
	1-787-009-11	DC. FAN		
	1-787-035-11	DC. FAN		
	1-787-036-11	DC. FAN		
	1-786-345-51	SWITCH, POWER (WITH AC INLET)		
	1-786-209-31	SWITCH, POWER (WITH AC INLET)		
	3-084-513-01	SHIELD HDD (H)		
	3-084-506-01	PANEL(H), REAR		
	3-088-455-01	SHIELD B (I)		
	3-088-253-01	LABEL, MODEL NUMBER(I)		
	3-074-548-01	COVER, SCREW		
	3-074-549-01	CAP		
	3-074-553-01	TITE (C2N), M3X6 +BV S		
	3-074-555-01	SCREW, +BV TAPPING		
	3-074-555-11	SCREW, +BV TAPPING		
	3-084-521-01	SCREW(M3X27)		
	3-074-556-01	SCREW, BRAZIER HEAD P TIGHT		
	3-084-509-01	BUTTON, SWITCH(H)		
	3-060-400-01	TAPPING (B2X6.5)		
	3-074-557-01	TAPE, VOID		
	3-074-558-01	CAUTION LABEL		
	A-6801-026-A	SW-430 COMPL		
	A-6801-138-A	GH-026 COMPL (DD FN 2R2R/C AR)		
	A-6801-139-A	GH-026 COMPL (DD TN 2R2R/C AR)		
	A-6801-140-A	GH-026 COMPL (DD FN 2R2R)		
	A-6801-141-A	GH-026 COMPL (DD TN 2R2R)		
	A-6800-396-A	MD BLOCK ASSY		
	X-3953-585-1	COVER(H) ASSY, UPPER		
	X-3954-056-1	SHIELD A (I) ASSY		
	X-3953-586-1	COVER(H) ASSY, LOWER		
	X-3953-587-1	PLATE(H) ASSY, ORNAMENTAL		
	3-074-550-01	LID		





**CAUTION**  
The components identified by mark  or dotted line with mark  are critical for safety. Replace only with part number specified.

Ref-No.	Part No.	Description	Remark	Place code
3	1-763-639-22	MOTOR, DC		
	1-763-639-32	MOTOR, DC		
	1-763-889-12	MOTOR, DC		
	1-763-791-12	MOTOR, DC (SLED)		
	1-763-700-23	MOTOR, DC (SPINDLE)		
	1-763-700-31	MOTOR, DC (SPINDLE)		
	8-835-781-11	MOTOR, DC (SPINDLE)		
	1-763-883-13	MOTOR, DC (SPINDLE)		
	1-763-883-21	MOTOR, DC (SPINDLE)		
16	3-060-399-01	Screw skew T5*3.5		
15	3-082-653-01	0 PART-NO. 3 MAIN M2X3		
9	3-065-276-01	SCREW, STEP		
8	3-081-830-01	INSULATOR		
32	3-068-075-02	SCREW (SUB), STEP		
34	3-084-533-01	SPRING (TILT), LEAF		
10	3-084-529-01	CHASSIS		
13	3-084-530-01	SHAFT(H), MAIN		
14	3-081-825-01	RACK		
33	3-084-532-01	CAM, TILT		
23	8-820-151-19	DEVICE, OPTICAL KHS-400C/K1NP5		
	8-820-151-20	DEVICE, OPTICAL KHS-400C/C-NP5		
	8-820-151-21	DEVICE, OPTICAL KHS-400C/C1NP5		
	8-820-151-27	DEVICE, OPTICAL KHS-400C/C1NP5		
	8-820-151-28	DEVICE, OPTICAL KHS-400C/C1NP5		
	8-820-151-29	DEVICE, OPTICAL KHS-400C/C1NP5		
	1-758-939-11	OPTICAL PICK UP (SF-HD7)		
	1-758-939-21	OPTICAL PICK UP (SF-HD7)		
	1-758-939-31	OPTICAL PICK UP (SF-HD7)		
	1-758-939-41	OPTICAL PICK UP (SF-HD7)		
1-758-939-51	OPTICAL PICK UP (SF-HD8)			
1-758-939-61	OPTICAL PICK UP (SF-HD9)			
1-758-939-71	OPTICAL PICK UP (SF-HD10)			
22	8-820-151-32	DEVICE, OPTICAL KHS-400C/K1NP8		
	8-820-151-33	DEVICE, OPTICAL KHS-400C/C-NP8		
	3-081-829-01	SCREW(P2X3.7)		
28	3-084-522-01	TRAY(H)		
35	3-084-531-01	SHAFT, SUB		
30	X-3953-283-2	FRAME(H) ASSY, MAIN		
103	X-3953-590-1	FRAME(H) ASSY, MAIN		
	3-074-558-01	CAUTION LABEL		
7	X-3953-591-1	FRAME ASSY, SUB		
27	X-3953-589-1	BRACKET ASSY, PULLEY		
17	3-060-400-01	TAPPING (B2X6.5)		
MF1	3-059-856-01	PULLEY		
MF2	3-084-527-01	SLIDE CAM		
MF3	3-084-526-01	DRIVING GEAR		
MF4	3-065-505-02	RUBBER BELT		
MF5	3-084-528-01	GEAR COVER		
MF6	3-060-400-01	Tapping B2*6.5		
MF9	1-763-781-21	DC MOTOR(LO UNIT)		
	1-763-782-21	DC MOTOR(LO UNIT)		

## SECTION 4 ELECTRICAL PART LIST

**NOTE:**

- Due to standardization , replacements in the parts list may be different from the parts specified in the diagrams or the components used on the set.
- RESISTORS  
METAL :Metal-film resistor.  
F: nonflammable
- SEMICONDUCTORS  
In each case , u:  $\mu$  ,for example:  
uA.:  $\mu$  A.. uPA.:  $\mu$  PA..  
uPB.:  $\mu$  PB.. uPC.:  $\mu$  PC.. uPD.:  $\mu$  PD..

- CAPACITORS  
uF:  $\mu$  F
- COILS  
uH:  $\mu$  H

When indicating parts by reference number. please include the board.

**NOTE:**

- SC Classification  
S: Supplied parts  
U: Unsupplied parts

**Note:**

The components identified by mark  $\triangle$  or dotted line with mark  $\triangle$  are critical for safety.

Replace only with part number specified.



ELECTRICAL PARTS LIST

SCPH-50000

I-chassis

SC	LOCATION	SONY P/N	PRODUCTION NAME AND DESCRIPTION	REFERENCE	SC	LOCATION	SONY P/N	PRODUCTION NAME AND DESCRIPTION	REFERENCE	SC	LOCATION	SONY P/N	PRODUCTION NAME AND DESCRIPTION	REFERENCE
U	C329	1-164-943-81	CAP,SMD,CER 10000PF 10% 16V 1005 X7R	FJT 2R2R,TXI 2R2R	U	C443	1-100-391-21	CAP,SMD,ALU 180MF 20% 2.5V $\psi$ 5	FJT 2R2R,TXI 2R2R	U	C528	1-125-837-91	CAP,SMD,CER 1MF 10% 6.3V 1608 X7R	FJT 2R2R,TXI 2R2R
U	C330	1-164-943-81	CAP,SMD,CER 10000PF 10% 16V 1005 X7R	FJT 2R2R,TXI 2R2R	U	C445	1-117-720-91	CAP,SMD,CER 4.7MF +80/-20% 10V 2012 Y5V	FJT 2R2R,TXI 2R2R	U	C529	1-128-008-21	CAP,SMD,ALU 3.3MF 20% 35V $\psi$ 3	FJT 2R2R,TXI 2R2R
U	C331	1-164-943-81	CAP,SMD,CER 10000PF 10% 16V 1005 X7R	FJT 2R2R,TXI 2R2R	U	C449	1-162-964-91	CAP,SMD,CER 1000PF 10% 50V 1608 X7R	FJT 2R2R,TXI 2R2R	U	C530	1-128-008-21	CAP,SMD,ALU 3.3MF 20% 35V $\psi$ 3	FJT 2R2R,TXI 2R2R
U	C332	1-164-943-81	CAP,SMD,CER 10000PF 10% 16V 1005 X7R	FJT 2R2R,TXI 2R2R	U	C450	1-107-826-91	CAP,SMD,CER 0.1MF 10% 16V 1608 X7R	FJT 2R2R,TXI 2R2R	U	C543	1-113-619-91	CAP,SMD,CER 0.47MF+80/-20% 10V 1608 Y5V	FJT 2R2R,TXI 2R2R
U	C333	1-164-943-81	CAP,SMD,CER 10000PF 10% 16V 1005 X7R	FJT 2R2R,TXI 2R2R	U	C452	1-164-156-91	CAP,SMD,CER 0.1MF+80/-20% 25V 1608 Y5V	FJT 2R2R,TXI 2R2R	U	C544	1-137-765-21	CAP,SMD,ALU 47MF 20% 16V $\psi$ 5	FJT 2R2R,TXI 2R2R
U	C334	1-164-943-81	CAP,SMD,CER 10000PF 10% 16V 1005 X7R	FJT 2R2R,TXI 2R2R	U	C454	1-162-970-91	CAP,SMD,CER 0.01MF 10% 25V 1608 X7R	FJT 2R2R,TXI 2R2R	U	C545	1-137-765-21	CAP,SMD,ALU 47MF 20% 16V $\psi$ 5	FJT 2R2R,TXI 2R2R
U	C335	1-164-943-81	CAP,SMD,CER 10000PF 10% 16V 1005 X7R	FJT 2R2R,TXI 2R2R	U	C456	1-127-760-91	CAP,SMD,CER 4.7MF 10% 6.3V 2012 X7R	FJT 2R2R,TXI 2R2R	U	C550	1-107-826-91	CAP,SMD,CER 0.1MF 10% 16V 1608 X7R	FJT 2R2R,TXI 2R2R
U	C336	1-164-943-81	CAP,SMD,CER 10000PF 10% 16V 1005 X7R	FJT 2R2R,TXI 2R2R	U	C458	1-162-964-91	CAP,SMD,CER 1000PF 10% 50V 1608 X7R	FJT 2R2R,TXI 2R2R	U	C551	1-107-826-91	CAP,SMD,CER 0.1MF 10% 16V 1608 X7R	FJT 2R2R,TXI 2R2R
U	C337	1-164-943-81	CAP,SMD,CER 10000PF 10% 16V 1005 X7R	FJT 2R2R,TXI 2R2R	U	C460	1-162-928-91	CAP,SMD,CER 120PF 5% 50V 1608 NPO	TXI 2R2R	U	C553	1-107-826-91	CAP,SMD,CER 0.1MF 10% 16V 1608 X7R	FJT 2R2R,TXI 2R2R
U	C338	1-125-777-81	CAP,SMD,CER 0.1MF 10% 10V 1005 X7R	FJT 2R2R,TXI 2R2R	U	C461	1-164-733-91	CAP,SMD,CER 820PF 10% 50V 1608 X7R	TXI 2R2R	U	C554	1-107-826-91	CAP,SMD,CER 0.1MF 10% 16V 1608 X7R	FJT 2R2R,TXI 2R2R
U	C342	1-125-777-81	CAP,SMD,CER 0.1MF 10% 10V 1005 X7R	FJT 2R2R,TXI 2R2R	U	C462	1-163-009-91	CAP,SMD,CER 1000PF 10% 50V 2012 X7R	FJT 2R2R,TXI 2R2R	U	C555	1-107-826-91	CAP,SMD,CER 0.1MF 10% 16V 1608 X7R	FJT 2R2R,TXI 2R2R
U	C343	1-125-777-81	CAP,SMD,CER 0.1MF 10% 10V 1005 X7R	FJT 2R2R,TXI 2R2R	U	C465	1-107-826-91	CAP,SMD,CER 0.1MF 10% 16V 1608 X7R	FJT 2R2R,TXI 2R2R	U	C559	1-107-826-91	CAP,SMD,CER 0.1MF 10% 16V 1608 X7R	FJT 2R2R,TXI 2R2R
U	C344	1-125-777-81	CAP,SMD,CER 0.1MF 10% 10V 1005 X7R	FJT 2R2R,TXI 2R2R	U	C467	1-126-209-21	CAP,SMD,ALU 100MF 20% 4V $\psi$ 5	FJT 2R2R,TXI 2R2R	U	C562	1-107-826-91	CAP,SMD,CER 0.1MF 10% 16V 1608 X7R	FJT 2R2R,TXI 2R2R
U	C345	1-107-826-91	CAP,SMD,CER 0.1MF 10% 16V 1608 X7R	FJT 2R2R,TXI 2R2R	U	C469	1-117-863-91	CAP,SMD,CER 0.47MF 10% 6.3V 1608 X7R	FJT 2R2R	U	C563	1-107-826-91	CAP,SMD,CER 0.1MF 10% 16V 1608 X7R	FJT 2R2R,TXI 2R2R
U	C355	1-125-777-81	CAP,SMD,CER 0.1MF 10% 10V 1005 X7R	FJT 2R2R,TXI 2R2R	U	C469	1-164-230-91	CAP,SMD,CER 220PF 5% 50V 1608 NPO	TXI 2R2R	U	C564	1-107-826-91	CAP,SMD,CER 0.1MF 10% 16V 1608 X7R	FJT 2R2R,TXI 2R2R
U	C356	1-107-826-91	CAP,SMD,CER 0.1MF 10% 16V 1608 X7R	FJT 2R2R,TXI 2R2R	U	C470	1-107-826-91	CAP,SMD,CER 0.1MF 10% 16V 1608 X7R	FJT 2R2R,TXI 2R2R	U	C566	1-107-826-91	CAP,SMD,CER 0.1MF 10% 16V 1608 X7R	FJT 2R2R,TXI 2R2R
U	C363	1-107-826-91	CAP,SMD,CER 0.1MF 10% 16V 1608 X7R	FJT 2R2R,TXI 2R2R	U	C471	1-218-887-91	RES,SMD,47K 0.5% 1/10W 1608	FJT 2R2R	U	C567	1-107-826-91	CAP,SMD,CER 0.1MF 10% 16V 1608 X7R	FJT 2R2R,TXI 2R2R
U	C364	1-125-777-81	CAP,SMD,CER 0.1MF 10% 10V 1005 X7R	FJT 2R2R,TXI 2R2R	U	C471	1-164-379-91	CAP,SMD,CER 43PF 5% 50V 1608 NPO	TXI 2R2R	U	C568	1-107-826-91	CAP,SMD,CER 0.1MF 10% 16V 1608 X7R	FJT 2R2R,TXI 2R2R
U	C365	1-125-777-81	CAP,SMD,CER 0.1MF 10% 10V 1005 X7R	FJT 2R2R,TXI 2R2R	U	C472	1-107-826-91	CAP,SMD,CER 0.1MF 10% 16V 1608 X7R	FJT 2R2R,TXI 2R2R	U	C570	1-107-826-91	CAP,SMD,CER 0.1MF 10% 16V 1608 X7R	FJT 2R2R,TXI 2R2R
U	C366	1-125-777-81	CAP,SMD,CER 0.1MF 10% 10V 1005 X7R	FJT 2R2R,TXI 2R2R	U	C473	1-162-970-91	CAP,SMD,CER 0.01MF 10% 25V 1608 X7R	FJT 2R2R,TXI 2R2R	U	C571	1-107-826-91	CAP,SMD,CER 0.1MF 10% 16V 1608 X7R	FJT 2R2R,TXI 2R2R
U	C367	1-125-777-81	CAP,SMD,CER 0.1MF 10% 10V 1005 X7R	FJT 2R2R,TXI 2R2R	U	C474	1-107-826-91	CAP,SMD,CER 0.1MF 10% 16V 1608 X7R	FJT 2R2R,TXI 2R2R	U	C572	1-107-826-91	CAP,SMD,CER 0.1MF 10% 16V 1608 X7R	FJT 2R2R,TXI 2R2R
U	C368	1-125-777-81	CAP,SMD,CER 0.1MF 10% 10V 1005 X7R	FJT 2R2R,TXI 2R2R	U	C475	1-117-863-91	CAP,SMD,CER 0.47MF 10% 6.3V 1608 X7R	FJT 2R2R	U	C574	1-107-826-91	CAP,SMD,CER 0.1MF 10% 16V 1608 X7R	FJT 2R2R,TXI 2R2R
U	C369	1-125-777-81	CAP,SMD,CER 0.1MF 10% 10V 1005 X7R	FJT 2R2R,TXI 2R2R	U	C475	1-164-315-91	CAP,SMD,CER 470PF 5% 50V 1608 NPO	TXI 2R2R	U	C602	1-164-156-91	CAP,SMD,CER 0.1MF+80/-20% 25V 1608 Y5V	FJT 2R2R,TXI 2R2R
U	C370	1-162-964-91	CAP,SMD,CER 1000PF 10% 50V 1608 X7R	FJT 2R2R,TXI 2R2R	U	C477	1-107-826-91	RES,SMD,47K 0.5% 1/10W 1608	FJT 2R2R	U	C604	1-135-259-91	CAP,SMD,CER 0.1MF+80/-20% 6.3V A CASE	FJT 2R2R,TXI 2R2R
U	C371	1-162-964-91	CAP,SMD,CER 1000PF 10% 50V 1608 X7R	FJT 2R2R,TXI 2R2R	U	C478	1-126-209-21	CAP,SMD,ALU 100MF 20% 4V $\psi$ 5	FJT 2R2R,TXI 2R2R	U	C606	1-162-964-91	CAP,SMD,CER 1000PF 10% 50V 1608 X7R	FJT 2R2R,TXI 2R2R
U	C372	1-165-492-21	CAP,SMD,ALU 100MF 20% 10V $\psi$ 5	FJT 2R2R,TXI 2R2R	U	C480	1-107-725-91	CAP,SMD,CER 0.1MF 10% 16V 2012 X7R	FJT 2R2R,TXI 2R2R	U	C607	1-162-968-91	CAP,SMD,CER 4700PF 10% 50V 1608 X7R	FJT 2R2R,TXI 2R2R
U	C373	1-165-492-21	CAP,SMD,ALU 100MF 20% 10V $\psi$ 5	FJT 2R2R,TXI 2R2R	U	C482	1-107-826-91	CAP,SMD,CER 0.1MF 10% 16V 1608 X7R	FJT 2R2R,TXI 2R2R	U	C608	1-125-777-81	CAP,SMD,CER 0.1MF 10% 10V 1005 X7R	FJT 2R2R,TXI 2R2R
U	C392	1-107-826-91	CAP,SMD,CER 0.1MF 10% 16V 1608 X7R	FJT 2R2R,TXI 2R2R	U	C483	1-107-826-91	CAP,SMD,CER 0.1MF 10% 16V 1608 X7R	FJT 2R2R,TXI 2R2R	U	C609	1-164-739-91	CAP,SMD,CER 560PF 5% 50V 1608 NPO	FJT 2R2R,TXI 2R2R
U	C393	1-125-777-81	CAP,SMD,CER 0.1MF 10% 10V 1005 X7R	FJT 2R2R,TXI 2R2R	U	C486	1-137-765-21	CAP,SMD,ALU 47MF 20% 16V $\psi$ 5	FJT 2R2R,TXI 2R2R	U	C610	1-164-156-91	CAP,SMD,CER 0.1MF+80/-20% 25V 1608 Y5V	FJT 2R2R,TXI 2R2R
U	C394	1-107-826-91	CAP,SMD,CER 0.1MF 10% 16V 1608 X7R	FJT 2R2R,TXI 2R2R	U	C487	1-100-390-21	CAP,SMD,ALU 180MF 20% 6.3V $\psi$ 6.3	FJT 2R2R,TXI 2R2R	U	C611	1-164-156-91	CAP,SMD,CER 0.1MF+80/-20% 25V 1608 Y5V	FJT 2R2R,TXI 2R2R
U	C395	1-125-777-81	CAP,SMD,CER 0.1MF 10% 10V 1005 X7R	FJT 2R2R,TXI 2R2R	U	C488	1-115-566-91	CAP,SMD,CER 4.7MF 10% 10V 3216 X7R	FJT 2R2R,TXI 2R2R	U	C612	1-164-156-91	CAP,SMD,CER 0.1MF+80/-20% 25V 1608 Y5V	FJT 2R2R,TXI 2R2R
U	C396	1-125-777-81	CAP,SMD,CER 0.1MF 10% 10V 1005 X7R	FJT 2R2R,TXI 2R2R	U	C489	1-162-964-91	CAP,SMD,CER 1000PF 10% 50V 1608 X7R	FJT 2R2R,TXI 2R2R	U	C615	1-164-156-91	CAP,SMD,CER 0.1MF+80/-20% 25V 1608 Y5V	FJT 2R2R,TXI 2R2R
U	C397	1-125-777-81	CAP,SMD,CER 0.1MF 10% 10V 1005 X7R	FJT 2R2R,TXI 2R2R	U	C490	1-126-209-21	CAP,SMD,ALU 100MF 20% 4V $\psi$ 5	FJT 2R2R,TXI 2R2R	U	C616	1-164-156-91	CAP,SMD,CER 0.1MF+80/-20% 25V 1608 Y5V	FJT 2R2R,TXI 2R2R
U	C398	1-125-777-81	CAP,SMD,CER 0.1MF 10% 10V 1005 X7R	FJT 2R2R,TXI 2R2R	U	C491	1-126-209-21	CAP,SMD,ALU 100MF 20% 4V $\psi$ 5	FJT 2R2R,TXI 2R2R	U	C617	1-164-937-81	CAP,SMD,CER 1000PF 10% 16V 1005 X7R	FJT 2R2R,TXI 2R2R
U	C402	1-164-505-91	CAP,SMD,CER 2.2MF+80/-20% 16V 2012 Y5V	FJT 2R2R,TXI 2R2R	U	C492	1-107-826-91	CAP,SMD,CER 0.1MF 10% 16V 1608 X7R	TXI 2R2R	U	C618	1-125-777-81	CAP,SMD,CER 0.1MF 10% 10V 1005 X7R	FJT 2R2R,TXI 2R2R
U	C403	1-164-937-81	CAP,SMD,CER 1000PF 10% 16V 1005 X7R	FJT 2R2R,TXI 2R2R	U	C493	1-107-826-91	CAP,SMD,CER 0.1MF 10% 16V 1608 X7R	TXI 2R2R	U	C619	1-162-916-91	CAP,SMD,CER 12PF 5% 50V 1608 NPO	FJT 2R2R,TXI 2R2R
U	C404	1-125-837-91	CAP,SMD,CER 1MF 10% 6.3V 1608 X7R	FJT 2R2R,TXI 2R2R	U	C494	1-163-021-91	CAP,SMD,CER 0.01MF 10% 50V 2012 X7R	FJT 2R2R,TXI 2R2R	U	C620	1-107-826-91	CAP,SMD,CER 0.1MF 10% 16V 1608 X7R	FJT 2R2R,TXI 2R2R
U	C407	1-107-826-91	CAP,SMD,CER 0.1MF 10% 16V 1608 X7R	FJT 2R2R,TXI 2R2R	U	C495	1-125-837-91	CAP,SMD,CER 1MF 10% 6.3V 1608 X7R	FJT 2R2R,TXI 2R2R	U	C623	1-125-777-81	CAP,SMD,CER 0.1MF 10% 10V 1005 X7R	FJT 2R2R,TXI 2R2R
U	C408	1-107-826-91	CAP,SMD,CER 0.1MF 10% 16V 1608 X7R	FJT 2R2R,TXI 2R2R	U	C496	1-107-682-91	CAP,SMD,CER 1MF 10% 16V 3216 X7R	FJT 2R2R,TXI 2R2R	U	C625	1-125-777-81	CAP,SMD,CER 0.1MF 10% 10V 1005 X7R	FJT 2R2R,TXI 2R2R
U	C414	1-164-505-91	CAP,SMD,CER 2.2MF+80/-20% 16V 2012 Y5V	FJT 2R2R,TXI 2R2R	U	C497	1-162-964-91	CAP,SMD,CER 1000PF 10% 50V 1608 X7R	FJT 2R2R,TXI 2R2R	U	C626	1-125-777-81	CAP,SMD,CER 0.1MF 10% 10V 1005 X7R	FJT 2R2R,TXI 2R2R
U	C416	1-111-253-91	CAP,SMD,TAN 100MF 20% 6.3V C CASE	FJT 2R2R,TXI 2R2R	U	C498	1-127-760-91	CAP,SMD,CER 4.7MF 10% 6.3V 2012 X7R	FJT 2R2R,TXI 2R2R	U	C627	1-125-777-81	CAP,SMD,CER 0.1MF 10% 10V 1005 X7R	FJT 2R2R,TXI 2R2R
U	C417	1-162-964-91	CAP,SMD,CER 1000PF 10% 50V 1608 X7R	FJT 2R2R,TXI 2R2R	U	C499	1-164-505-91	CAP,SMD,CER 2.2MF+80/-20% 16V 2012 Y5V	FJT 2R2R,TXI 2R2R	U	C635	1-162-968-91	CAP,SMD,CER 4700PF 10% 50V 1608 X7R	FJT 2R2R,TXI 2R2R
U	C422	1-107-826-91	CAP,SMD,CER 0.1MF 10% 16V 1608 X7R	FJT 2R2R,TXI 2R2R	U	C501	1-164-346-91	CAP,SMD,CER 1MF+80/-20% 16V 2012 Y5V	FJT 2R2R,TXI 2R2R	U	C638	1-162-970-91	CAP,SMD,CER 0.01MF 10% 25V 1608 X7R	FJT 2R2R,TXI 2R2R
U	C423	1-107-826-91	CAP,SMD,CER 0.1MF 10% 16V 1608 X7R	FJT 2R2R,TXI 2R2R	U	C503	1-163-009-91	CAP,SMD,CER 1000PF 10% 50V 2012 X7R	FJT 2R2R,TXI 2R2R	U	C639	1-164-211-91	CAP,SMD,CER 150PF 5% 50V 1608 NPO	FJT 2R2R,TXI 2R2R
U	C425	1-104-851-91	CAP,SMD,TAN 10MF 20% 10V A CASE	FJT 2R2R,TXI 2R2R	U	C504	1-164-346-91	CAP,SMD,CER 1MF+80/-20% 16V 2012 Y5V	FJT 2R2R,TXI 2R2R	U	C640	1-135-259-91	CAP,SMD,TAN 10MF 20% 6.3V A CASE	FJT 2R2R,TXI 2R2R
U	C426	1-107-826-91	CAP,SMD,CER 0.1MF 10% 16V 1608 X7R	FJT 2R2R,TXI 2R2R	U	C507	1-163-009-91	CAP,SMD,CER 1000PF 10% 50V 2012 X7R	FJT 2R2R,TXI 2R2R	U	C642	1-164-156-91	CAP,SMD,CER 0.1MF+80/-20% 25V 1608 Y5V	FJT 2R2R,TXI 2R2R
U														



ELECTRICAL PARTS LIST

SCPH-50000

I-chassis

SC	LOCATION	SONY P/N	PRODUCTION NAME AND DESCRIPTION	REFERENCE	SC	LOCATION	SONY P/N	PRODUCTION NAME AND DESCRIPTION	REFERENCE	SC	LOCATION	SONY P/N	PRODUCTION NAME AND DESCRIPTION	REFERENCE
U	C952	1-107-826-91	CAP,SMD,CER 0.1MF 10% 16V 1608 X7R	FJT 2R2R,TXI 2R2R	U	C1023	1-162-970-91	CAP,SMD,CER 0.01MF 10% 25V 1608 X7R	FJT 2R2R,TXI 2R2R	U	C3107	1-164-874-81	CAP,SMD,CER 100PF 5% 50V 1005 NPO	FJT 2R2R,TXI 2R2R
U	C953	1-107-826-91	CAP,SMD,CER 0.1MF 10% 16V 1608 X7R	FJT 2R2R,TXI 2R2R	U	C1024	1-162-970-91	CAP,SMD,CER 0.01MF 10% 25V 1608 X7R	FJT 2R2R,TXI 2R2R	U	CB703	1-125-764-41	CAP,SMD,CNET 100PF 5% 50V 3216 NPO	FJT 2R2R,TXI 2R2R
U	C954	1-107-826-91	CAP,SMD,CER 0.1MF 10% 16V 1608 X7R	FJT 2R2R,TXI 2R2R	U	C1025	1-162-970-91	CAP,SMD,CER 0.01MF 10% 25V 1608 X7R	FJT 2R2R,TXI 2R2R				CONNECTER	
U	C956	1-107-826-91	CAP,SMD,CER 0.1MF 10% 16V 1608 X7R	FJT 2R2R,TXI 2R2R	U	C1026	1-162-970-91	CAP,SMD,CER 0.01MF 10% 25V 1608 X7R	FJT 2R2R,TXI 2R2R	S	CN201	1-815-631-13	CONN.,PTH,SQUARE TYPE 12P	FJT 2R2R,TXI 2R2R
U	C957	1-107-826-91	CAP,SMD,CER 0.1MF 10% 16V 1608 X7R	FJT 2R2R,TXI 2R2R	U	C1027	1-162-970-91	CAP,SMD,CER 0.01MF 10% 25V 1608 X7R	FJT 2R2R,TXI 2R2R	S	CN302	1-817-512-21	CONN.,SMD,FPC/FCP (ZIF) 36P	FJT 2R2R,TXI 2R2R
U	C958	1-107-826-91	CAP,SMD,CER 0.1MF 10% 16V 1608 X7R	FJT 2R2R,TXI 2R2R	U	C1028	1-162-970-91	CAP,SMD,CER 0.01MF 10% 25V 1608 X7R	FJT 2R2R,TXI 2R2R	S	CN303	1-817-531-11	CONN.,PTH (USB)	FJT 2R2R,TXI 2R2R
U	C959	1-107-826-91	CAP,SMD,CER 0.1MF 10% 16V 1608 X7R	FJT 2R2R,TXI 2R2R	U	C1029	1-162-970-91	CAP,SMD,CER 0.01MF 10% 25V 1608 X7R	FJT 2R2R,TXI 2R2R	S	CN401	1-817-510-11	CONN.,PTH (PWB)	FJT 2R2R,TXI 2R2R
U	C960	1-107-826-91	CAP,SMD,CER 0.1MF 10% 16V 1608 X7R	FJT 2R2R,TXI 2R2R	U	C1030	1-162-970-91	CAP,SMD,CER 0.01MF 10% 25V 1608 X7R	FJT 2R2R,TXI 2R2R	S	CN403	1-784-650-21	CONN. SMD,2P	FJT 2R2R,TXI 2R2R
U	C961	1-107-826-91	CAP,SMD,CER 0.1MF 10% 16V 1608 X7R	FJT 2R2R,TXI 2R2R	U	C1031	1-162-970-91	CAP,SMD,CER 0.01MF 10% 25V 1608 X7R	FJT 2R2R,TXI 2R2R	S	CN406	1-766-342-21	CONN.,SMD, FFC/FPC 12P	FJT 2R2R,TXI 2R2R
U	C962	1-107-826-91	CAP,SMD,CER 0.1MF 10% 16V 1608 X7R	FJT 2R2R,TXI 2R2R	U	C1032	1-162-970-91	CAP,SMD,CER 0.01MF 10% 25V 1608 X7R	FJT 2R2R,TXI 2R2R	S	CN501	1-476-736-12	CONN.,PTH,TRANSMITTER UNIT, LIGHT	FJT 2R2R,TXI 2R2R
U	C963	1-107-826-91	CAP,SMD,CER 0.1MF 10% 16V 1608 X7R	FJT 2R2R,TXI 2R2R	U	C1033	1-162-970-91	CAP,SMD,CER 0.01MF 10% 25V 1608 X7R	FJT 2R2R,TXI 2R2R	S	CN504	1-815-632-12	CONN.,PTH BOARD TO BOARD 110P	FJT 2R2R,TXI 2R2R
U	C965	1-107-826-91	CAP,SMD,CER 0.1MF 10% 16V 1608 X7R	FJT 2R2R,TXI 2R2R	U	C1034	1-162-970-91	CAP,SMD,CER 0.01MF 10% 25V 1608 X7R	FJT 2R2R,TXI 2R2R	S	CN801	1-817-511-21	CONN.,SMD, FFC/FPC (ZIF) 30P	FJT 2R2R,TXI 2R2R
U	C966	1-107-826-91	CAP,SMD,CER 0.1MF 10% 16V 1608 X7R	FJT 2R2R,TXI 2R2R	U	C1035	1-162-970-91	CAP,SMD,CER 0.01MF 10% 25V 1608 X7R	FJT 2R2R,TXI 2R2R	S	CN802	1-816-184-21	CONN.,SMD,FPC/FPC 5P	FJT 2R2R,TXI 2R2R
U	C969	1-125-777-81	CAP,SMD,CER 0.1MF 10% 10V 1005 X7R	FJT 2R2R,TXI 2R2R	U	C1036	1-162-970-91	CAP,SMD,CER 0.01MF 10% 25V 1608 X7R	FJT 2R2R,TXI 2R2R	S	CN803	1-779-206-21	CONN.,SMD,FPC(LIF)(NON-ZIF) 4P	FJT 2R2R,TXI 2R2R
U	C980	1-107-826-91	CAP,SMD,CER 0.1MF 10% 16V 1608 X7R	FJT 2R2R,TXI 2R2R	U	C1037	1-162-970-91	CAP,SMD,CER 0.01MF 10% 25V 1608 X7R	FJT 2R2R,TXI 2R2R	S	CN804	1-794-194-21	CONN.,SMD,FPC/FPC 13P	FJT 2R2R,TXI 2R2R
U	C981	1-107-826-91	CAP,SMD,CER 0.1MF 10% 16V 1608 X7R	FJT 2R2R,TXI 2R2R	U	C1038	1-162-970-91	CAP,SMD,CER 0.01MF 10% 25V 1608 X7R	FJT 2R2R,TXI 2R2R				DIODE	
U	C982	1-107-826-91	CAP,SMD,CER 0.1MF 10% 16V 1608 X7R	FJT 2R2R,TXI 2R2R	U	C1039	1-162-970-91	CAP,SMD,CER 0.01MF 10% 25V 1608 X7R	FJT 2R2R,TXI 2R2R	U	D201	8-719-065-78	DIO,SMD,ZENER 4.7V,MAZFF12000L50	FJT 2R2R,TXI 2R2R
U	C983	1-107-826-91	CAP,SMD,CER 0.1MF 10% 16V 1608 X7R	FJT 2R2R,TXI 2R2R	U	C1040	1-162-970-91	CAP,SMD,CER 0.01MF 10% 25V 1608 X7R	FJT 2R2R,TXI 2R2R	U	D202	6-500-044-01	DIO,SMD,ZENER 6.8V,DF6A6.8FU(TE85R)	FJT 2R2R,TXI 2R2R
U	C984	1-107-826-91	CAP,SMD,CER 0.1MF 10% 16V 1608 X7R	FJT 2R2R,TXI 2R2R	U	C1041	1-162-970-91	CAP,SMD,CER 0.01MF 10% 25V 1608 X7R	FJT 2R2R,TXI 2R2R	U	D203	6-500-044-01	DIO,SMD,ZENER 6.8V,DF6A6.8FU(TE85R)	FJT 2R2R,TXI 2R2R
U	C985	1-107-826-91	CAP,SMD,CER 0.1MF 10% 16V 1608 X7R	FJT 2R2R,TXI 2R2R	U	C1042	1-162-970-91	CAP,SMD,CER 0.01MF 10% 25V 1608 X7R	FJT 2R2R,TXI 2R2R	U	D208	6-500-044-01	DIO,SMD,ZENER 6.8V,DF6A6.8FU(TE85R)	FJT 2R2R,TXI 2R2R
U	C986	1-107-826-91	CAP,SMD,CER 0.1MF 10% 16V 1608 X7R	FJT 2R2R,TXI 2R2R	U	C1043	1-162-970-91	CAP,SMD,CER 0.01MF 10% 25V 1608 X7R	FJT 2R2R,TXI 2R2R	U	D303	6-500-606-01	DIO,SMD,1SS383(TSRSONY,F)	FJT 2R2R,TXI 2R2R
U	C987	1-107-826-91	CAP,SMD,CER 0.1MF 10% 16V 1608 X7R	FJT 2R2R,TXI 2R2R	U	C1044	1-162-970-91	CAP,SMD,CER 0.01MF 10% 25V 1608 X7R	FJT 2R2R,TXI 2R2R	U	D404	8-719-078-78	DIO,SMD,MA6Z718001S0	FJT 2R2R,TXI 2R2R
U	C988	1-107-826-91	CAP,SMD,CER 0.1MF 10% 16V 1608 X7R	FJT 2R2R,TXI 2R2R	U	C1045	1-162-970-91	CAP,SMD,CER 0.01MF 10% 25V 1608 X7R	FJT 2R2R,TXI 2R2R	U	D500	8-719-941-21	DIO,SMD,DAP202UT106	FJT 2R2R,TXI 2R2R
U	C989	1-107-826-91	CAP,SMD,CER 0.1MF 10% 16V 1608 X7R	FJT 2R2R,TXI 2R2R	U	C1046	1-162-970-91	CAP,SMD,CER 0.01MF 10% 25V 1608 X7R	FJT 2R2R,TXI 2R2R	U	D501	6-500-252-01	DIO,SMD,SML-512WWT86	FJT 2R2R,TXI 2R2R
U	C990	1-107-826-91	CAP,SMD,CER 0.1MF 10% 16V 1608 X7R	FJT 2R2R,TXI 2R2R	U	C1047	1-162-970-91	CAP,SMD,CER 0.01MF 10% 25V 1608 X7R	FJT 2R2R,TXI 2R2R	U	D801	8-719-065-68	DIO,SMD,ZENER 4.7V,MAZFF04700L50	FJT 2R2R,TXI 2R2R
U	C991	1-125-837-91	CAP,SMD,CER 1MF 10% 6.3V 1608 X7R	FJT 2R2R,TXI 2R2R	U	C1048	1-162-970-91	CAP,SMD,CER 0.01MF 10% 25V 1608 X7R	FJT 2R2R,TXI 2R2R	U	D802	8-719-065-68	DIO,SMD,ZENER 4.7V,MAZFF04700L50	FJT 2R2R,TXI 2R2R
U	C995	1-107-826-91	CAP,SMD,CER 0.1MF 10% 16V 1608 X7R	FJT 2R2R,TXI 2R2R	U	C1049	1-162-970-91	CAP,SMD,CER 0.01MF 10% 25V 1608 X7R	FJT 2R2R,TXI 2R2R				FERRITE BEAD	
U	C1000	1-162-970-91	CAP,SMD,CER 0.01MF 10% 25V 1608 X7R	FJT 2R2R,TXI 2R2R	U	C1050	1-162-970-91	CAP,SMD,CER 0.01MF 10% 25V 1608 X7R	FJT 2R2R,TXI 2R2R	U	FB102	1-469-667-21	FB,SMD,1000Ω 25% 100mA 1.8Ω 1608(HF)	FJT 2R2R,TXI 2R2R
U	C1001	1-162-970-91	CAP,SMD,CER 0.01MF 10% 25V 1608 X7R	FJT 2R2R,TXI 2R2R	U	C1051	1-162-970-91	CAP,SMD,CER 0.01MF 10% 25V 1608 X7R	FJT 2R2R,TXI 2R2R	U	FB103	1-469-667-21	FB,SMD,1000Ω 25% 100mA 1.8Ω 1608(HF)	FJT 2R2R,TXI 2R2R
U	C1002	1-162-970-91	CAP,SMD,CER 0.01MF 10% 25V 1608 X7R	FJT 2R2R,TXI 2R2R	U	C1052	1-162-970-91	CAP,SMD,CER 0.01MF 10% 25V 1608 X7R	FJT 2R2R,TXI 2R2R	U	FB104	1-469-667-21	FB,SMD,1000Ω 25% 100mA 1.8Ω 1608(HF)	FJT 2R2R,TXI 2R2R
U	C1003	1-162-970-91	CAP,SMD,CER 0.01MF 10% 25V 1608 X7R	FJT 2R2R,TXI 2R2R	U	C1053	1-162-970-91	CAP,SMD,CER 0.01MF 10% 25V 1608 X7R	FJT 2R2R,TXI 2R2R	U	FB105	1-469-667-21	FB,SMD,1000Ω 25% 100mA 1.8Ω 1608(HF)	FJT 2R2R,TXI 2R2R
U	C1004	1-162-970-91	CAP,SMD,CER 0.01MF 10% 25V 1608 X7R	FJT 2R2R,TXI 2R2R	U	C1054	1-162-970-91	CAP,SMD,CER 0.01MF 10% 25V 1608 X7R	FJT 2R2R,TXI 2R2R	U	FB201	1-414-813-21	FB,SMD,1000Ω 25% 200mA 0.4Ω 2012	FJT 2R2R,TXI 2R2R
U	C1005	1-162-970-91	CAP,SMD,CER 0.01MF 10% 25V 1608 X7R	FJT 2R2R,TXI 2R2R	U	C1055	1-162-970-91	CAP,SMD,CER 0.01MF 10% 25V 1608 X7R	FJT 2R2R,TXI 2R2R	U	FB202	1-500-113-22	FB,SMD,1000Ω 25% 190mA 0.6Ω 1608	FJT 2R2R,TXI 2R2R
U	C1006	1-162-970-91	CAP,SMD,CER 0.01MF 10% 25V 1608 X7R	FJT 2R2R,TXI 2R2R	U	C1056	1-162-970-91	CAP,SMD,CER 0.01MF 10% 25V 1608 X7R	FJT 2R2R,TXI 2R2R	U	FB203	1-500-113-22	FB,SMD,1000Ω 25% 190mA 0.6Ω 1608	FJT 2R2R,TXI 2R2R
U	C1007	1-162-970-91	CAP,SMD,CER 0.01MF 10% 25V 1608 X7R	FJT 2R2R,TXI 2R2R	U	C1057	1-162-970-91	CAP,SMD,CER 0.01MF 10% 25V 1608 X7R	FJT 2R2R,TXI 2R2R	U	FB204	1-500-113-22	FB,SMD,1000Ω 25% 190mA 0.6Ω 1608	FJT 2R2R,TXI 2R2R
U	C1008	1-162-970-91	CAP,SMD,CER 0.01MF 10% 25V 1608 X7R	FJT 2R2R,TXI 2R2R	U	C1058	1-162-970-91	CAP,SMD,CER 0.01MF 10% 25V 1608 X7R	FJT 2R2R,TXI 2R2R	U	FB205	1-500-113-22	FB,SMD,1000Ω 25% 190mA 0.6Ω 1608	FJT 2R2R,TXI 2R2R
U	C1009	1-162-970-91	CAP,SMD,CER 0.01MF 10% 25V 1608 X7R	FJT 2R2R,TXI 2R2R	U	C1059	1-162-970-91	CAP,SMD,CER 0.01MF 10% 25V 1608 X7R	FJT 2R2R,TXI 2R2R	U	FB206	1-500-113-22	FB,SMD,1000Ω 25% 190mA 0.6Ω 1608	FJT 2R2R,TXI 2R2R
U	C1010	1-162-970-91	CAP,SMD,CER 0.01MF 10% 25V 1608 X7R	FJT 2R2R,TXI 2R2R	U	C1060	1-162-970-91	CAP,SMD,CER 0.01MF 10% 25V 1608 X7R	FJT 2R2R,TXI 2R2R	U	FB303	1-400-154-21	FB,SMD,1000Ω 25% 50mA 0.8Ω 3216	FJT 2R2R,TXI 2R2R
U	C1011	1-162-970-91	CAP,SMD,CER 0.01MF 10% 25V 1608 X7R	FJT 2R2R,TXI 2R2R	U	C1061	1-162-970-91	CAP,SMD,CER 0.01MF 10% 25V 1608 X7R	FJT 2R2R,TXI 2R2R	U	FB308	1-400-154-21	FB,SMD,1000Ω 25% 50mA 0.8Ω 3216	FJT 2R2R,TXI 2R2R
U	C1012	1-162-970-91	CAP,SMD,CER 0.01MF 10% 25V 1608 X7R	FJT 2R2R,TXI 2R2R	U	C1062	1-162-970-91	CAP,SMD,CER 0.01MF 10% 25V 1608 X7R	FJT 2R2R,TXI 2R2R	U	FB313	1-469-324-21	FB,SMD,220Ω 25% 2A 0.05Ω 2012	FJT 2R2R,TXI 2R2R
U	C1013	1-162-970-91	CAP,SMD,CER 0.01MF 10% 25V 1608 X7R	FJT 2R2R,TXI 2R2R	U	C1063	1-162-970-91	CAP,SMD,CER 0.01MF 10% 25V 1608 X7R	FJT 2R2R,TXI 2R2R	U	FB314	1-469-324-21	FB,SMD,220Ω 25% 2A 0.05Ω 2012	FJT 2R2R,TXI 2R2R
U	C1014	1-162-970-91	CAP,SMD,CER 0.01MF 10% 25V 1608 X7R	FJT 2R2R,TXI 2R2R	U	C1064	1-162-970-91	CAP,SMD,CER 0.01MF 10% 25V 1608 X7R	FJT 2R2R,TXI 2R2R	U	FB315	1-469-324-21	FB,SMD,220Ω 25% 2A 0.05Ω 2012	FJT 2R2R,TXI 2R2R
U	C1015	1-162-970-91	CAP,SMD,CER 0.01MF 10% 25V 1608 X7R	FJT 2R2R,TXI 2R2R	U	C1065	1-162-970-91	CAP,SMD,CER 0.01MF 10% 25V 1608 X7R	FJT 2R2R,TXI 2R2R	U	FB316	1-469-324-21	FB,SMD,220Ω 25% 2A 0.05Ω 2012	FJT 2R2R,TXI 2R2R
U	C1016	1-162-970-91	CAP,SMD,CER 0.01MF 10% 25V 1608 X7R	FJT 2R2R,TXI 2R2R	U	C3100	1-164-874-81	CAP,SMD,CER 100PF 5% 50V 1005 NPO	FJT 2R2R,TXI 2R2R	U	FB317	1-469-110-21	FB,SMD,47Ω 25% 500mA 0.3Ω 1608	FJT 2R2R,TXI 2R2R
U	C1017	1-162-970-91	CAP,SMD,CER 0.01MF 10% 25V 1608 X7R	FJT 2R2R,TXI 2R2R	U	C3101	1-164-874-81	CAP,SMD,CER 100PF 5% 50V 1005 NPO	FJT 2R2R,TXI 2R2R	U	FB318	1-469-110-21	FB,SMD,47Ω 25% 500mA 0.3Ω 1608	FJT 2R2R,TXI 2R2R
U	C1018	1-162-970-91	CAP,SMD,CER 0.01MF 10% 25V 1608 X7R	FJT 2R2R,TXI 2R2R	U	C3102	1-164-874-81	CAP,SMD,CER 100PF 5% 50V 1005 NPO	FJT 2R2R,TXI 2R2R	U	FB319	1-469-110-21	FB,SMD,47Ω 25% 500mA 0.3Ω 1608	FJT 2R2R,TXI 2R2R
U	C1019	1-162-970-91	CAP,SMD,CER 0.01MF 10% 25V 1608 X7R	FJT 2R2R,TXI 2R2R	U	C3103	1-164-874-81	CAP,SMD,CER 100PF 5% 50V 1005 NPO	FJT 2R2R,TXI 2R2R	U	FB320	1-469-110-21	FB,SMD,47Ω 25% 500mA 0.3Ω 1608</	

ELECTRICAL PARTS LIST

SCPH-50000

I-chassis

SC	LOCATION	SONY P/N	PRODUCTION NAME AND DESCRIPTION	REFERENCE	SC	LOCATION	SONY P/N	PRODUCTION NAME AND DESCRIPTION	REFERENCE	SC	LOCATION	SONY P/N	PRODUCTION NAME AND DESCRIPTION	REFERENCE
U	FB324	1-469-110-21	FB,SMD,47Ω 25% 500mA 0.3Ω 1608	FJT 2R2R, TXI 2R2R						U	R116	1-211-983-91	RES,SMD,39 0.5% 1/10W 1608	FJT 2R2R, TXI 2R2R
U	FB408	1-469-667-21	FB,SMD,1000Ω 25% 100mA 1.8Ω 1608(HF)	FJT 2R2R, TXI 2R2R	S_Δ	PS001	1-576-519-21	FUSE,SMD,MICRO 1608 FCC16 401 AD	FJT 2R2R, TXI 2R2R	U	R117	1-211-983-91	RES,SMD,39 0.5% 1/10W 1608	FJT 2R2R, TXI 2R2R
U	FB409	1-469-094-21	FB,SMD,60Ω 25% 500mA 0.2Ω 1608	FJT 2R2R, TXI 2R2R	S_Δ	PS002	1-576-519-21	FUSE,SMD,MICRO 1608 FCC16 401 AD	FJT 2R2R, TXI 2R2R	U	R118	1-211-973-91	RES,SMD,15 0.5% 1/10W 1608	FJT 2R2R, TXI 2R2R
U	FB801	1-469-562-21	FB,SMD,1000Ω 25% 100mA 1.6Ω 1608	FJT 2R2R, TXI 2R2R	S_Δ	PS003	1-576-398-21	RINK,SMD,IC CCP2E63 3225 TYPE (2.500A)	FJT 2R2R, TXI 2R2R	U	R119	1-211-973-91	RES,SMD,15 0.5% 1/10W 1608	FJT 2R2R, TXI 2R2R
U	FB802	1-469-562-21	FB,SMD,1000Ω 25% 100mA 1.6Ω 1608	FJT 2R2R, TXI 2R2R	S_Δ	PS004	1-576-398-21	RINK,SMD,IC CCP2E63 3225 TYPE (2.500A)	FJT 2R2R, TXI 2R2R	U	R120	1-211-973-91	RES,SMD,15 0.5% 1/10W 1608	FJT 2R2R, TXI 2R2R
			<b>FILTER</b>		S_Δ	PS005	1-576-586-21	FUSE,SMD,MICRO 1608 TYPE 0.7A	FJT 2R2R, TXI 2R2R	U	R121	1-211-973-91	RES,SMD,15 0.5% 1/10W 1608	FJT 2R2R, TXI 2R2R
U	FL204	1-234-738-21	FILTER,SMD,EMI ARRAY 3216	FJT 2R2R, TXI 2R2R	S_Δ	PS006	1-576-586-21	FUSE,SMD,MICRO 1608 TYPE 0.7A	FJT 2R2R, TXI 2R2R	U	R131	1-216-833-91	RES,SMD,10K 5% 1/16W 1608	FJT 2R2R, TXI 2R2R
U	FL303	1-234-725-21	NETWORK,SMD,RC (USB) 4022	FJT 2R2R, TXI 2R2R	S_Δ	PS007	1-576-586-21	FUSE,SMD,MICRO 1608 TYPE 0.7A	FJT 2R2R, TXI 2R2R	U	R133	1-216-833-91	RES,SMD,10K 5% 1/16W 1608	FJT 2R2R, TXI 2R2R
			<b>IC</b>		S_Δ	PS008	1-576-282-21	RINK,SMD,SQUARE CHIP 3225 TYPE IC (1.200A)	FJT 2R2R, TXI 2R2R	U	R134	1-218-953-81	RES,SMD,1.0K 5% 1/16W 1005	FJT 2R2R, TXI 2R2R
S	IC102	6-702-936-01	IC,SMD,TC59RM716AGB-8	FJT 2R2R, TXI 2R2R	S_Δ	PS009	1-533-282-21	LINK,SMD,IC 3225 TYPE 2A	FJT 2R2R, TXI 2R2R	U	R139	1-216-801-91	RES,SMD,22 5% 1/16W 1608	FJT 2R2R, TXI 2R2R
S	IC103	6-702-936-01	IC,SMD,TC59RM716AGB-8	FJT 2R2R, TXI 2R2R	S_Δ	PS010	1-533-282-21	LINK,SMD,IC 3225 TYPE 2A	FJT 2R2R, TXI 2R2R	U	R145	1-218-953-81	RES,SMD,1.0K 5% 1/16W 1005	FJT 2R2R, TXI 2R2R
S	IC104	6-701-906-01	IC,SMD,CXD9708GB	FJT 2R2R, TXI 2R2R	S_Δ	PS011	1-533-282-21	LINK,SMD,IC 3225 TYPE 2A	FJT 2R2R, TXI 2R2R	U	R147	1-216-821-91	RES,SMD,1.0K 5% 1/16W 1608	FJT 2R2R, TXI 2R2R
S	IC107	6-704-688-01	IC,SMD,LM71C1MFX	FJT 2R2R, TXI 2R2R	S_Δ	PS012	1-576-282-21	RINK,SMD,SQUARE CHIP 3225 TYPE IC (1.200A)	FJT 2R2R, TXI 2R2R	U	R159	1-218-933-81	RES,SMD,22 5% 1/16W 1005	FJT 2R2R, TXI 2R2R
S	IC108	6-704-919-01	IC,SMD,CY22313	FJT 2R2R, TXI 2R2R	S_Δ	PS013	1-576-519-21	FUSE,SMD,MICRO 1608 FCC16 401 AD	FJT 2R2R, TXI 2R2R	U	R162	1-218-990-81	CONDUCTOR,SMD,1005	FJT 2R2R, TXI 2R2R
S	IC202	6-704-170-01	IC,SMD,CXD2949CGB-T7	FJT 2R2R, TXI 2R2R	S_Δ	PS014	1-533-282-21	LINK,SMD,IC 3225 TYPE 2A	FJT 2R2R, TXI 2R2R	U	R164	1-218-990-81	CONDUCTOR,SMD,1005	FJT 2R2R, TXI 2R2R
S	IC207	8-759-691-00	IC,SMD,JCP78M05CDTRK	FJT 2R2R, TXI 2R2R	S_Δ	PS015	1-576-677-21	RINK,SMD,IC 3225 TYPE 4A	FJT 2R2R, TXI 2R2R	U	R185	1-216-829-91	RES,SMD,4.7K 5% 1/16W 1608	FJT 2R2R, TXI 2R2R
S	IC209	6-703-308-01	IC,SMD,MM1592FFBEG	FJT 2R2R, TXI 2R2R	S_Δ	PS016	1-576-519-21	FUSE,SMD,MICRO 1608 FCC16 401 AD	FJT 2R2R, TXI 2R2R	U	R186	1-218-949-81	RES,SMD,47 5% 1/16W 1005	FJT 2R2R, TXI 2R2R
S	IC211	8-752-103-96	IC,SMD,CXM4000R-T6	FJT 2R2R, TXI 2R2R				<b>TRANSISTOR</b>		U	R187	1-218-953-81	RES,SMD,1.0K 5% 1/16W 1005	FJT 2R2R, TXI 2R2R
S	IC306	8-752-421-09	IC,SMD,CXD2954TM-TL	FJT 2R2R, TXI 2R2R	U	Q204	8-729-049-77	TR,SMD,PNP,HN1B01F-GR(TSLSONY)	FJT 2R2R, TXI 2R2R	U	R188	1-216-829-91	RES,SMD,4.7K 5% 1/16W 1608	FJT 2R2R, TXI 2R2R
S	IC403	6-703-967-01	IC,SMD,MM1579AFBE	FJT 2R2R, TXI 2R2R	U	Q401	6-550-633-01	TR,SMD,HAT2126RP-EL-E	FJT 2R2R, TXI 2R2R	U	R191	1-218-990-81	CONDUCTOR,SMD,1005	FJT 2R2R, TXI 2R2R
S	IC407	6-703-963-01	IC,SMD,MM1582AHBE	FJT 2R2R, TXI 2R2R	U	Q405	8-729-427-47	TR,SMD,NPN,XP4213-TXE	FJT 2R2R, TXI 2R2R	U	R196	1-218-933-81	RES,SMD,22 5% 1/16W 1005	FJT 2R2R, TXI 2R2R
S	IC409	6-703-353-01	IC,SMD,MB39A109PFT-G-BND-ER	FJT 2R2R	U	Q406	8-729-427-47	TR,SMD,NPN,XP4213-TXE	FJT 2R2R, TXI 2R2R	U	R201	1-216-829-91	RES,SMD,4.7K 5% 1/16W 1608	FJT 2R2R, TXI 2R2R
S	IC409	6-703-354-01	IC,SMD,SN105225DBTR	TXI 2R2R	U	Q409	8-729-427-47	TR,SMD,NPN,XP4213-TXE	FJT 2R2R, TXI 2R2R	U	R202	1-216-833-91	RES,SMD,10K 5% 1/16W 1608	FJT 2R2R, TXI 2R2R
S	IC413	6-702-460-01	IC,SMD,LP2985IM5X	FJT 2R2R, TXI 2R2R	U	Q412	6-550-026-01	TR,SMD,FET,IRF7328-TR	FJT 2R2R, TXI 2R2R	U	R216	1-216-864-91	CONDUCTOR,SMD,2A 100V 1608	FJT 2R2R, TXI 2R2R
S	IC414	6-701-175-01	IC,SMD,MC7808CDTT5	FJT 2R2R, TXI 2R2R	U	Q415	6-550-397-01	TR,SMD, 2SC5886(T6L)SOY,NF	FJT 2R2R, TXI 2R2R	U	R225	1-216-833-91	RES,SMD,10K 5% 1/16W 1608	FJT 2R2R, TXI 2R2R
S	IC415	8-759-581-11	IC,SMD,NJM2125F(TE2)	FJT 2R2R, TXI 2R2R	U	Q417	6-550-633-01	TR,SMD,HAT2126RP-EL-E	FJT 2R2R, TXI 2R2R	U	R245	1-216-805-91	RES,SMD,47 5% 1/16W 1608	FJT 2R2R, TXI 2R2R
S	IC417	6-703-968-01	IC,SMD,NCP631GD2TR4	FJT 2R2R, TXI 2R2R	U	Q418	8-729-427-47	TR,SMD,NPN,XP4213-TXE	FJT 2R2R, TXI 2R2R	U	R250	1-216-803-91	RES,SMD,33 5% 1/16W 1608	FJT 2R2R, TXI 2R2R
S	IC505	6-803-932-01	IC,SMD,MR26V6420G-052TMZ	FJT 2R2R, TXI 2R2R	U	Q423	8-729-014-20	TR,SMD,NPN,RN2304-TE85L	FJT 2R2R, TXI 2R2R	U	R251	1-216-837-91	RES,SMD,22K 5% 1/16W 1608	FJT 2R2R, TXI 2R2R
S	IC510	6-704-900-01	IC,SMD,CXD2955R (NOMAL)	FJT 2R2R, TXI 2R2R	U	Q425	6-550-769-01	TR,SMD,FDS6993	FJT 2R2R, TXI 2R2R	U	R252	1-216-839-91	RES,SMD,33K 5% 1/16W 1608	FJT 2R2R, TXI 2R2R
S	IC517	6-704-819-01	IC,SMD,CS4335-KSZR	FJT 2R2R, TXI 2R2R	U	Q505	8-729-021-09	TR,SMD,PNP,NPN,RN4904(TE85R)	FJT 2R2R, TXI 2R2R	U	R253	1-216-833-91	RES,SMD,10K 5% 1/16W 1608	FJT 2R2R, TXI 2R2R
S	IC605	8-752-417-96	IC,SMD,CXD3098Q	FJT 2R2R, TXI 2R2R	U	Q506	8-729-056-15	TR,SMD,NPN,IMH20T108	FJT 2R2R, TXI 2R2R	U	R257	1-216-824-91	RES,SMD,1.8K 5% 1/16W 1608	FJT 2R2R, TXI 2R2R
S	IC607	8-753-204-28	IC,SMD,CXR706080-103GG	FJT 2R2R, TXI 2R2R	U	Q600	8-729-048-50	TR,SMD,FET,2SK3018-T106	FJT 2R2R, TXI 2R2R	U	R258	1-216-295-91	CONDUCTOR,SMD,2A 500V 2102	FJT 2R2R, TXI 2R2R
S	IC801	6-703-491-01	IC,SMD,SP3727DAA0PMR	FJT 2R2R, TXI 2R2R	U	Q801	6-550-014-01	TR,SMD,FET,SSM6N15FU(TE85R)	FJT 2R2R, TXI 2R2R	U	R259	1-216-824-91	RES,SMD,1.8K 5% 1/16W 1608	FJT 2R2R, TXI 2R2R
S	IC802	6-703-763-01	IC,SMD,LA6508H-TLM-E	FJT 2R2R, TXI 2R2R	U	Q804	8-729-103-96	TR,SMD,PNP,2SB798-T1DL	FJT 2R2R, TXI 2R2R	U	R264	1-216-821-91	RES,SMD,1.0K 5% 1/16W 1608	FJT 2R2R, TXI 2R2R
S	IC803	6-703-762-01	IC,SMD,LB11971H-TLM-E	FJT 2R2R, TXI 2R2R	U	Q805	8-729-103-96	TR,SMD,PNP,2SB798-T1DL	FJT 2R2R, TXI 2R2R	U	R272	1-218-851-91	RES,SMD,1.5K 0.5% 1/10W 1608	FJT 2R2R, TXI 2R2R
S	IC807	8-759-691-00	IC,SMD,JCP78M05CDTRK	FJT 2R2R, TXI 2R2R	U	Q815	8-729-017-33	TR,SMD,NPN,RN1706-TE85R	FJT 2R2R, TXI 2R2R	U	R273	1-218-848-91	RES,SMD,1.1K 0.5% 1/10W 1608	FJT 2R2R, TXI 2R2R
S	IC3003	6-705-473-01	IC,SMD,IOP-LTx Rev.B normal	FJT 2R2R, TXI 2R2R				<b>RESISTORS</b>		U	R278	1-218-851-91	RES,SMD,1.5K 0.5% 1/10W 1608	FJT 2R2R, TXI 2R2R
			<b>INDUCTOR</b>		U	R101	1-211-981-91	RES,SMD,33 0.5% 1/10W 1608	FJT 2R2R, TXI 2R2R	U	R279	1-218-848-91	RES,SMD,1.1K 0.5% 1/10W 1608	FJT 2R2R, TXI 2R2R
U	L102	1-469-967-21	IND,SMD,10UH 20% 165mA 0.25Ω 2518	FJT 2R2R, TXI 2R2R	U	R102	1-208-865-81	RES,SMD,120 0.5% 1/16W 1005	FJT 2R2R, TXI 2R2R	U	R292	1-216-833-91	RES,SMD,10K 5% 1/16W 1608	FJT 2R2R, TXI 2R2R
U	L103	1-469-967-21	IND,SMD,10UH 20% 165mA 0.25Ω 2518	FJT 2R2R, TXI 2R2R	U	R103	1-211-981-91	RES,SMD,33 0.5% 1/10W 1608	FJT 2R2R, TXI 2R2R	U	R297	1-216-805-91	RES,SMD,47 5% 1/16W 1608	FJT 2R2R, TXI 2R2R
U	L105	1-414-771-91	IND,SMD,10.0UH 10% 180mA 0.70Ω 2116	FJT 2R2R, TXI 2R2R	U	R104	1-208-865-81	RES,SMD,120 0.5% 1/16W 1005	FJT 2R2R, TXI 2R2R	U	R298	1-216-805-91	RES,SMD,47 5% 1/16W 1608	FJT 2R2R, TXI 2R2R
U	L106	1-414-771-91	IND,SMD,10.0UH 10% 180mA 0.70Ω 2116	FJT 2R2R, TXI 2R2R	U	R106	1-216-809-91	RES,SMD,100 5% 1/16W 1608	FJT 2R2R, TXI 2R2R	U	R299	1-216-805-91	RES,SMD,47 5% 1/16W 1608	FJT 2R2R, TXI 2R2R
U	L203	1-469-967-21	IND,SMD,10UH 20% 165mA 0.25Ω 2518	FJT 2R2R, TXI 2R2R	U	R107	1-216-809-91	RES,SMD,100 5% 1/16W 1608	FJT 2R2R, TXI 2R2R	U	R308	1-216-833-91	RES,SMD,10K 5% 1/16W 1608	FJT 2R2R, TXI 2R2R
U	L401	1-424-918-21	IND,SMD,10UH 20% 3.6A 24.3mΩ±20% 10.1mm*11	FJT 2R2R, TXI 2R2R	U	R109	1-218-961-81	RES,SMD,4.7K 5% 1/16W 1005	FJT 2R2R, TXI 2R2R	U	R309	1-216-833-91	RES,SMD,10K 5% 1/16W 1608	FJT 2R2R, TXI 2R2R
U	L404	1-456-044-11	IND,SMD,2.1UH 15% 3.9mΩ 20% 10.5mm*10mm	FJT 2R2R, TXI 2R2R	U	R110	1-211-983-91	RES,SMD,39 0.5% 1/10W 1608	FJT 2R2R, TXI 2R2R	U	R311	1-216-829-91	RES,SMD,4.7K 5% 1/16W 1608	FJT 2R2R, TXI 2R2R
U	L408	1-456-045-11	IND,SMD,6.2UH 20% 8.2mΩ 20% 12.8mm*12.5mm	FJT 2R2R, TXI 2R2R	U	R111	1-211-983-91	RES,SMD,39 0.5% 1/10W 1608	FJT 2R2R, TXI 2R2R	U	R312	1-218-990-81	CONDUCTOR,SMD,1005	FJT 2R2R, TXI 2R2R
U	L414	1-456-043-11	IND,SMD,12UH 15% 22.3mΩ 20% 10.1mm*10.1mm	FJT 2R2R, TXI 2R2R	U	R112	1-211-989-91	RES,SMD,68 0.5% 1/10W 1608	FJT 2R2R, TXI 2R2R	U	R321	1-216-823-91	RES,SMD,1.5K 5% 1/16W 1608	FJT 2R2R, TXI 2R2R
U	L415	1-411-749-21	FILTER,SMD,NOISE (ZBF55105-PT)	FJT 2R2R, TXI 2R2R	U	R113	1-211-989-91	RES,SMD,68 0.5% 1/10W 1608	FJT 2R2R, TXI 2R2R	U	R322	1-216-857-91	RES,SMD,1.0M 5% 1/16W 1608	FJT 2R2R, TXI 2R2R
U	L801	1-469-524-91	IND,SMD,4.7UH 20% 210mA 0.24Ω 2520(NLFV25)	FJT 2R2R, TXI 2R2R	U	R114	1-211-983-91	RES,SMD,39 0.5% 1/10W 1608	FJT 2R2R, TXI 2R2R	U	R324	1-216-833-91	RES,SMD,10K 5% 1/16W 1608	FJT 2R2R, TXI 2R2R
U	L802	1-469-524-91	IND,SMD,4.7UH 20% 210mA 0.24Ω 2520(NLFV25)	FJT 2R2R, TXI 2R2R	U	R115	1-211-983-91	RES,SMD,39 0.5% 1/10W 1608	FJT 2R2R, TXI 2R2R	U	R328	1-216-841-91	RES,SMD,47K 5% 1/16W 1608	FJT 2R2R, TXI 2R2R

ELECTRICAL PARTS LIST

SC	LOCATION	SONY P/N	PRODUCTION NAME AND DESCRIPTION	REFERENCE	SC	LOCATION	SONY P/N	PRODUCTION NAME AND DESCRIPTION	REFERENCE	SC	LOCATION	SONY P/N	PRODUCTION NAME AND DESCRIPTION	REFERENCE
U	R329	1-218-937-81	RES,SMD,47 5% 1/16W 1005	FJT 2R2R,TX12R2R	U	R459	1-216-833-91	RES,SMD,10K 5% 1/16W 1608	FJT 2R2R,TX1 2R2R	U	R557	1-218-990-81	CONDUCTOR,SMD,1005	FJT 2R2R,TX1 2R2R
U	R330	1-216-803-91	RES,SMD,33 5% 1/16W 1608	FJT 2R2R,TX1 2R2R	U	R460	1-216-837-91	RES,SMD,6.8K 0.5% 1/10W 1608	FJT 2R2R	U	R560	1-216-295-91	CONDUCTOR,SMD,2A 500V 2012	FJT 2R2R,TX1 2R2R
U	R331	1-218-937-81	RES,SMD,47 5% 1/16W 1005	FJT 2R2R,TX1 2R2R	U	R460	1-218-873-91	RES,SMD,47K 0.5% 1/10W 1608	TX12R2R	U	R561	1-216-295-91	CONDUCTOR,SMD,2A 500V 2012	FJT 2R2R,TX1 2R2R
U	R333	1-218-990-81	CONDUCTOR,SMD,1005	FJT 2R2R,TX1 2R2R	U	R461	1-216-309-91	RES,SMD,5.6 5% 1/10W 2012	FJT 2R2R,TX1 2R2R	U	R562	1-218-959-81	RES,SMD,3.3K 5% 1/16W 1005	FJT 2R2R,TX1 2R2R
U	R349	1-216-821-91	RES,SMD,1.0K 5% 1/16W 1608	FJT 2R2R,TX12R2R	U	R462	1-216-857-91	RES,SMD,1.0M 5% 1/16W 1608	FJT 2R2R,TX1 2R2R	U	R563	1-218-935-81	RES,SMD,33 5% 1/16W 1005	FJT 2R2R,TX1 2R2R
U	R350	1-218-937-81	RES,SMD,47 5% 1/16W 1005	FJT 2R2R,TX1 2R2R	U	R463	1-216-857-91	RES,SMD,1.0M 5% 1/16W 1608	FJT 2R2R,TX1 2R2R	U	R564	1-216-803-91	RES,SMD,33 5% 1/16W 1608	FJT 2R2R,TX1 2R2R
U	R352	1-216-797-91	RES,SMD,10 5% 1/16W 1608	FJT 2R2R,TX1 2R2R	U	R464	1-216-857-91	RES,SMD,1.0M 5% 1/16W 1608	FJT 2R2R,TX1 2R2R	U	R565	1-216-803-91	RES,SMD,33 5% 1/16W 1608	FJT 2R2R,TX1 2R2R
U	R353	1-216-821-91	RES,SMD,1.0K 5% 1/16W 1608	FJT 2R2R,TX1 2R2R	U	R465	1-216-845-91	RES,SMD,100K 5% 1/16W 1608	FJT 2R2R,TX1 2R2R	U	R574	1-216-812-91	RES,SMD,180 5% 1/16W 1608	FJT 2R2R,TX1 2R2R
U	R354	1-216-827-91	RES,SMD,3.3K 5% 1/16W 1608	FJT 2R2R,TX1 2R2R	U	R466	1-216-821-91	RES,SMD,1.0K 5% 1/16W 1608	FJT 2R2R,TX1 2R2R	U	R575	1-216-850-91	RES,SMD,270K 5% 1/16W 1608	FJT 2R2R,TX1 2R2R
U	R356	1-216-801-91	RES,SMD,22 5% 1/16W 1608	FJT 2R2R,TX1 2R2R	U	R467	1-216-857-91	RES,SMD,1.0M 5% 1/16W 1608	FJT 2R2R,TX1 2R2R	U	R576	1-216-833-91	RES,SMD,10K 5% 1/16W 1608	FJT 2R2R,TX1 2R2R
U	R365	1-218-937-81	RES,SMD,47 5% 1/16W 1005	FJT 2R2R,TX1 2R2R	U	R468	1-216-845-91	RES,SMD,100K 5% 1/16W 1608	FJT 2R2R,TX1 2R2R	U	R577	1-216-818-91	RES,SMD,560 5% 1/16W 1608	FJT 2R2R,TX1 2R2R
U	R366	1-218-937-81	RES,SMD,47 5% 1/16W 1005	FJT 2R2R,TX1 2R2R	U	R469	1-216-821-91	RES,SMD,1.0K 5% 1/16W 1608	FJT 2R2R,TX1 2R2R	U	R578	1-216-818-91	RES,SMD,560 5% 1/16W 1608	FJT 2R2R,TX1 2R2R
U	R367	1-218-937-81	RES,SMD,47 5% 1/16W 1005	FJT 2R2R,TX1 2R2R	U	R470	1-216-845-91	RES,SMD,100K 5% 1/16W 1608	FJT 2R2R	U	R579	1-216-833-91	RES,SMD,180 5% 1/16W 1608	FJT 2R2R,TX1 2R2R
U	R368	1-218-937-81	RES,SMD,47 5% 1/16W 1005	FJT 2R2R,TX1 2R2R	U	R472	1-218-871-91	RES,SMD,10K 0.5% 1/10W 1608	FJT 2R2R,TX1 2R2R	U	R580	1-216-850-91	RES,SMD,270K 5% 1/16W 1608	FJT 2R2R,TX1 2R2R
U	R392	1-216-801-91	RES,SMD,22 5% 1/16W 1608	FJT 2R2R,TX1 2R2R	U	R473	1-218-863-91	RES,SMD,4.7K 0.5% 1/10W 1608	FJT 2R2R,TX1 2R2R	U	R592	1-216-829-91	RES,SMD,4.7K 5% 1/16W 1608	FJT 2R2R,TX1 2R2R
U	R393	1-218-933-81	RES,SMD,22 5% 1/16W 1005	FJT 2R2R,TX1 2R2R	U	R474	1-216-853-91	RES,SMD,470K 5% 1/16W 1608	FJT 2R2R,TX1 2R2R	U	R593	1-216-829-91	RES,SMD,4.7K 5% 1/16W 1608	FJT 2R2R,TX1 2R2R
U	R394	1-216-801-91	RES,SMD,22 5% 1/16W 1608	FJT 2R2R,TX1 2R2R	U	R475	1-216-864-91	CONDUCTOR,SMD,2A 100V 1608	TX12R2R	U	R604	1-216-842-91	RES,SMD,100K 5% 1/16W 1608	FJT 2R2R,TX1 2R2R
U	R395	1-218-957-81	RES,SMD,2.2K 5% 1/16W 1005	FJT 2R2R,TX1 2R2R	U	R479	1-216-833-91	RES,SMD,10K 5% 1/16W 1608	FJT 2R2R,TX1 2R2R	U	R605	1-216-833-91	RES,SMD,10K 5% 1/16W 1608	FJT 2R2R,TX1 2R2R
U	R396	1-218-933-81	RES,SMD,22 5% 1/16W 1005	FJT 2R2R,TX1 2R2R	U	R482	1-216-810-91	RES,SMD,120 5% 1/16W 1608	FJT 2R2R,TX1 2R2R	U	R607	1-216-833-91	RES,SMD,10K 5% 1/16W 1608	FJT 2R2R,TX1 2R2R
U	R397	1-218-933-81	RES,SMD,22 5% 1/16W 1005	FJT 2R2R,TX1 2R2R	U	R485	1-216-864-91	CONDUCTOR,SMD,2A 100V 1608	FJT 2R2R,TX1 2R2R	U	R609	1-216-833-91	RES,SMD,10K 5% 1/16W 1608	FJT 2R2R,TX1 2R2R
U	R399	1-216-801-91	RES,SMD,22 5% 1/16W 1608	FJT 2R2R,TX1 2R2R	U	R486	1-216-809-91	RES,SMD,100 5% 1/16W 1608	FJT 2R2R,TX1 2R2R	U	R610	1-216-857-91	RES,SMD,1.0M 5% 1/16W 1608	FJT 2R2R,TX1 2R2R
U	R404	1-216-839-91	RES,SMD,33K 5% 1/16W 1608	FJT 2R2R	U	R487	1-216-821-91	RES,SMD,1.0K 5% 1/16W 1608	FJT 2R2R,TX1 2R2R	U	R611	1-216-823-91	RES,SMD,1.5K 5% 1/16W 1608	FJT 2R2R,TX1 2R2R
U	R404	1-216-845-91	RES,SMD,100K 5% 1/16W 1608	TX1 2R2R	U	R490	1-216-864-91	CONDUCTOR,SMD,2A 100V 1608	FJT 2R2R,TX1 2R2R	U	R612	1-216-833-91	RES,SMD,10K 5% 1/16W 1608	FJT 2R2R,TX1 2R2R
U	R405	1-216-839-91	RES,SMD,33K 5% 1/16W 1608	FJT 2R2R	U	R491	1-216-864-91	CONDUCTOR,SMD,2A 100V 1608	FJT 2R2R,TX1 2R2R	U	R613	1-216-833-91	RES,SMD,10K 5% 1/16W 1608	FJT 2R2R,TX1 2R2R
U	R405	1-216-845-91	RES,SMD,100K 5% 1/16W 1608	TX1 2R2R	U	R492	1-216-864-91	CONDUCTOR,SMD,2A 100V 1608	FJT 2R2R,TX1 2R2R	U	R614	1-216-833-91	RES,SMD,10K 5% 1/16W 1608	FJT 2R2R,TX1 2R2R
U	R410	1-216-296-91	CONDUCTOR,SMD,2A 500V 3216	FJT 2R2R,TX1 2R2R	U	R493	1-216-864-91	CONDUCTOR,SMD,2A 100V 1608	FJT 2R2R,TX1 2R2R	U	R621	1-216-833-91	RES,SMD,10K 5% 1/16W 1608	FJT 2R2R,TX1 2R2R
U	R411	1-216-296-91	CONDUCTOR,SMD,2A 500V 3216	FJT 2R2R,TX1 2R2R	U	R494	1-216-864-91	CONDUCTOR,SMD,2A 100V 1608	FJT 2R2R,TX1 2R2R	U	R622	1-218-933-81	RES,SMD,22 5% 1/16W 1005	FJT 2R2R,TX1 2R2R
U	R412	1-216-296-91	CONDUCTOR,SMD,2A 500V 3216	FJT 2R2R,TX1 2R2R	U	R495	1-216-864-91	CONDUCTOR,SMD,2A 100V 1608	FJT 2R2R,TX1 2R2R	U	R625	1-216-833-91	RES,SMD,10K 5% 1/16W 1608	FJT 2R2R,TX1 2R2R
U	R413	1-216-296-91	CONDUCTOR,SMD,2A 500V 3216	FJT 2R2R,TX1 2R2R	U	R496	1-216-027-91	RES,SMD,120 5% 1/10W 2012	FJT 2R2R,TX1 2R2R	U	R637	1-216-864-91	CONDUCTOR,SMD,2A 100V 1608	FJT 2R2R,TX1 2R2R
U	R415	1-216-833-91	RES,SMD,10K 5% 1/16W 1608	FJT 2R2R	U	R497	1-216-027-91	RES,SMD,120 5% 1/10W 2012	FJT 2R2R,TX1 2R2R	U	R642	1-216-833-91	RES,SMD,10K 5% 1/16W 1608	FJT 2R2R,TX1 2R2R
U	R415	1-216-839-91	RES,SMD,33K 5% 1/16W 1608	TX1 2R2R	U	R498	1-216-027-91	RES,SMD,120 5% 1/10W 2012	FJT 2R2R,TX1 2R2R	U	R644	1-216-833-91	RES,SMD,10K 5% 1/16W 1608	FJT 2R2R,TX1 2R2R
U	R416	1-216-833-91	RES,SMD,10K 5% 1/16W 1608	FJT 2R2R	U	R499	1-216-864-91	CONDUCTOR,SMD,2A 100V 1608	FJT 2R2R,TX1 2R2R	U	R649	1-216-833-91	RES,SMD,10K 5% 1/16W 1608	FJT 2R2R,TX1 2R2R
U	R416	1-216-839-91	RES,SMD,33K 5% 1/16W 1608	TX1 2R2R	U	R503	1-216-803-91	RES,SMD,33 5% 1/16W 1608	FJT 2R2R,TX1 2R2R	U	R650	1-216-833-91	RES,SMD,10K 5% 1/16W 1608	FJT 2R2R,TX1 2R2R
U	R433	1-216-821-91	RES,SMD,1.0K 5% 1/16W 1608	FJT 2R2R,TX1 2R2R	U	R504	1-216-803-91	RES,SMD,33 5% 1/16W 1608	FJT 2R2R,TX1 2R2R	U	R651	1-216-837-91	RES,SMD,22K 5% 1/16W 1608	FJT 2R2R,TX1 2R2R
U	R434	1-216-864-91	CONDUCTOR,SMD,2A 100V 1608	TX1 2R2R	U	R505	1-216-803-91	RES,SMD,33 5% 1/16W 1608	FJT 2R2R,TX1 2R2R	U	R654	1-216-845-91	RES,SMD,100K 5% 1/16W 1608	FJT 2R2R,TX1 2R2R
U	R435	1-216-864-91	CONDUCTOR,SMD,2A 100V 1608	TX1 2R2R	U	R506	1-216-809-91	RES,SMD,100 5% 1/16W 1608	FJT 2R2R,TX1 2R2R	U	R657	1-216-839-91	RES,SMD,33K 5% 1/16W 1608	FJT 2R2R,TX1 2R2R
U	R446	1-218-867-91	RES,SMD,6.8K 0.5% 1/10W 1608	FJT 2R2R	U	R508	1-218-933-81	RES,SMD,22 5% 1/16W 1005	FJT 2R2R,TX1 2R2R	U	R658	1-216-833-91	RES,SMD,10K 5% 1/16W 1608	FJT 2R2R,TX1 2R2R
U	R446	1-216-864-91	CONDUCTOR,SMD,2A 100V 1608	TX1 2R2R	U	R509	1-216-821-91	RES,SMD,1.0K 5% 1/16W 1608	FJT 2R2R,TX1 2R2R	U	R664	1-216-821-91	RES,SMD,1.0K 5% 1/16W 1608	FJT 2R2R,TX1 2R2R
U	R447	1-216-817-91	RES,SMD,470 5% 1/16W 1608	FJT 2R2R	U	R513	1-218-937-81	RES,SMD,47 5% 1/16W 1005	FJT 2R2R,TX1 2R2R	U	R665	1-216-821-91	RES,SMD,1.0K 5% 1/16W 1608	FJT 2R2R,TX1 2R2R
U	R447	1-216-864-91	CONDUCTOR,SMD,2A 100V 1608	TX1 2R2R	U	R516	1-216-809-91	RES,SMD,100 5% 1/16W 1608	FJT 2R2R,TX1 2R2R	U	R667	1-216-861-91	RES,SMD,2.2M 5% 1/16W 1608	FJT 2R2R,TX1 2R2R
U	R450	1-216-295-91	CONDUCTOR,SMD,2A 500V 2012	FJT 2R2R,TX1 2R2R	U	R517	1-216-809-91	RES,SMD,100 5% 1/16W 1608	FJT 2R2R,TX1 2R2R	U	R668	1-216-853-91	RES,SMD,470K 5% 1/16W 1608	FJT 2R2R,TX1 2R2R
U	R451	1-216-295-91	CONDUCTOR,SMD,2A 500V 2012	FJT 2R2R,TX1 2R2R	U	R522	1-216-833-91	RES,SMD,10K 5% 1/16W 1608	FJT 2R2R,TX1 2R2R	U	R669	1-216-845-91	RES,SMD,100K 5% 1/16W 1608	FJT 2R2R,TX1 2R2R
U	R452	1-216-864-91	CONDUCTOR,SMD,2A 100V 1608	FJT 2R2R	U	R531	1-216-809-91	RES,SMD,100 5% 1/16W 1608	FJT 2R2R,TX1 2R2R	U	R670	1-216-833-91	RES,SMD,10K 5% 1/16W 1608	FJT 2R2R,TX1 2R2R
U	R452	1-216-790-91	RES,SMD,2.7 5% 1/16W 1608	TX1 2R2R	U	R550	1-218-937-81	RES,SMD,47 5% 1/16W 1005	FJT 2R2R,TX1 2R2R	U	R671	1-216-827-91	RES,SMD,3.3K 5% 1/16W 1608	FJT 2R2R,TX1 2R2R
U	R454	1-216-864-91	CONDUCTOR,SMD,2A 100V 1608	FJT 2R2R	U	R551	1-218-937-81	RES,SMD,47 5% 1/16W 1005	FJT 2R2R	U	R672	1-218-888-91	RES,SMD,5.1K 0.5% 1/10W 1608	FJT 2R2R,TX1 2R2R
U	R454	1-216-790-91	RES,SMD,2.7 5% 1/16W 1608	TX1 2R2R	U	R552	1-218-937-81	RES,SMD,47 5% 1/16W 1005	FJT 2R2R,TX1 2R2R	U	R673	1-216-827-91	RES,SMD,3.3K 5% 1/16W 1608	FJT 2R2R,TX1 2R2R
U	R456	1-216-864-91	CONDUCTOR,SMD,2A 100V 1608	FJT 2R2R	U	R553	1-218-937-81	RES,SMD,47 5% 1/16W 1005	FJT 2R2R,TX1 2R2R	U	R674	1-216-845-91	RES,SMD,100K 5% 1/16W 1608	FJT 2R2R,TX1 2R2R
U	R457	1-218-865-91	RES,SMD,3.3K 0.5% 1/10W 1608	FJT 2R2R	U	R554	1-218-945-81	RES,SMD,220 5% 1/16W 1005	FJT 2R2R,TX1 2R2R	U	R675	1-216-839-91	RES,SMD,33K 5% 1/16W 1608	FJT 2R2R,TX1 2R2R
U	R457	1-218-873-91	RES,SMD,12K 0.5% 1/10W 1608	TX1 2R2R	U	R555	1-218-990-81	CONDUCTOR,SMD,1005	FJT 2R2R,TX1 2R2R	U	R678	1-216-829-91	RES,SMD,4.7K 0.5% 1/10W 1608	FJT 2R2R,TX1 2R2R
U	R458	1-216-864-91	CONDUCTOR,SMD,2A 100V 1608											





## ELECTRICAL PARTS LIST

<u>SC</u>	<u>LOCATION</u>	<u>SONY P/N</u>	<u>PRODUCTION NAME AND DESCRIPTION</u>	<u>REFERENCE</u>
S	RB527	1-233-414-21	RES,SMD,RNET 4.7K 5% 1/16W 3216 8P4R	FJT 2R2R,TX12R2R
S	RB528	1-233-414-21	RES,SMD,RNET 4.7K 5% 1/16W 3216 8P4R	FJT 2R2R,TX12R2R
S	RB529	1-233-414-21	RES,SMD,RNET 4.7K 5% 1/16W 3216 8P4R	FJT 2R2R,TX12R2R
S	RB530	1-233-414-21	RES,SMD,RNET 4.7K 5% 1/16W 3216 8P4R	FJT 2R2R,TX12R2R
S	RB531	1-233-414-21	RES,SMD,RNET 4.7K 5% 1/16W 3216 8P4R	FJT 2R2R,TX12R2R
S	RB603	1-233-415-21	RES,SMD,RNET 10K 5% 1/16W 3216 8P4R	FJT 2R2R,TX12R2R
S	RB606	1-233-412-21	RES,SMD,RNET 1.0K 5% 1/16W 3216 8P4R	FJT 2R2R,TX12R2R
S	RB609	1-233-423-21	RES,SMD,RNET 47 5% 1/16W 3216 8P4R	FJT 2R2R,TX12R2R
S	RB610	1-233-415-21	RES,SMD,RNET 10K 5% 1/16W 3216 8P4R	FJT 2R2R,TX12R2R
<b>THERMISTOR</b>				
S	TH001	1-804-812-11	THERMISTOR,SMD,POSITIVE,miniSMDC100F	FJT 2R2R,TX12R2R
S	TH002	1-804-812-11	THERMISTOR,SMD,POSITIVE,miniSMDC100F	FJT 2R2R,TX12R2R
S	TH003	1-804-812-11	THERMISTOR,SMD,POSITIVE,miniSMDC100F	FJT 2R2R,TX12R2R
<b>CRYSTAL</b>				
S	X102	1-781-640-21	VIBRATOR,SMD,CRYSTAL 18.432MHZ	FJT 2R2R,TX12R2R
S	X302	1-781-768-21	VIBRATOR,SMD,CRYSTAL 16.9344MHZ	FJT 2R2R,TX12R2R
S	X601	1-781-768-21	VIBRATOR,SMD,CRYSTAL 16.9344MHZ	FJT 2R2R,TX12R2R
S	X602	1-781-266-41	VIBRATOR,SMD,CRYSTAL 32.768KHZ	FJT 2R2R,TX12R2R
<b>SWITCH BOARD</b>				
S		A-6800-026-A	SW-430 COMPL	FJT 2R2R,TX12R2R
<b>CAPACITANCE</b>				
U	C752	1-125-837-91	CAP,SMD,CER 1MF 10% 6.3V 1608 X7R	FJT 2R2R,TX12R2R
<b>CONNECTOR</b>				
S	CN751	1-793-906-21	CONN,SMD,FFC/FPC (LIF) 12P	FJT 2R2R,TX12R2R
<b>DIODE</b>				
U	D751	6-500-607-01	DIO,SMD,CL-501YE-D-T	FJT 2R2R,TX12R2R
U	D752	6-500-204-01	DIO,SMD,CL-190UB2-X-T	FJT 2R2R,TX12R2R
<b>IC</b>				
S	IC751	6-704-096-01	IC,SMD,RS-570D-T	FJT 2R2R,TX12R2R
<b>INDUCTOR</b>				
U	L751	1-469-847-21	IND,SMD,100UH 20% 30mA 7OHM 2012	FJT 2R2R,TX12R2R
<b>RESISTOR</b>				
U	R751	1-216-832-91	RES,SMD,8.2K 5% 1/16W 1608	FJT 2R2R,TX12R2R
U	R752	1-216-831-91	RES,SMD,6.8K 5% 1/16W 1608	FJT 2R2R,TX12R2R
U	R753	1-216-993-91	RES,SMD,2.4K 5% 1/16W 1608	FJT 2R2R,TX12R2R
U	R754	1-216-832-91	RES,SMD,8.2K 5% 1/16W 1608	FJT 2R2R,TX12R2R
<b>SWITCH</b>				
U	S751	1-771-917-21	SWITCH,SMD,TACTILE	FJT 2R2R,TX12R2R
U	S752	1-771-917-21	SWITCH,SMD,TACTILE	FJT 2R2R,TX12R2R