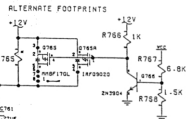
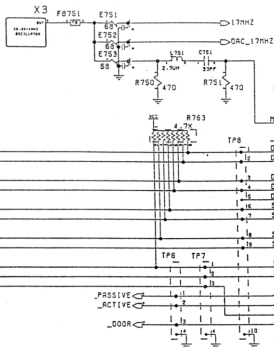
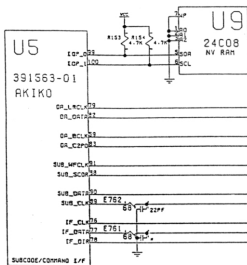


L/GS PLAYER PCB

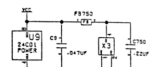
ROM DECOUPLING



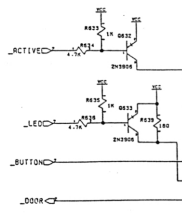


CD ROM

26 PIN CD CONNECTOR

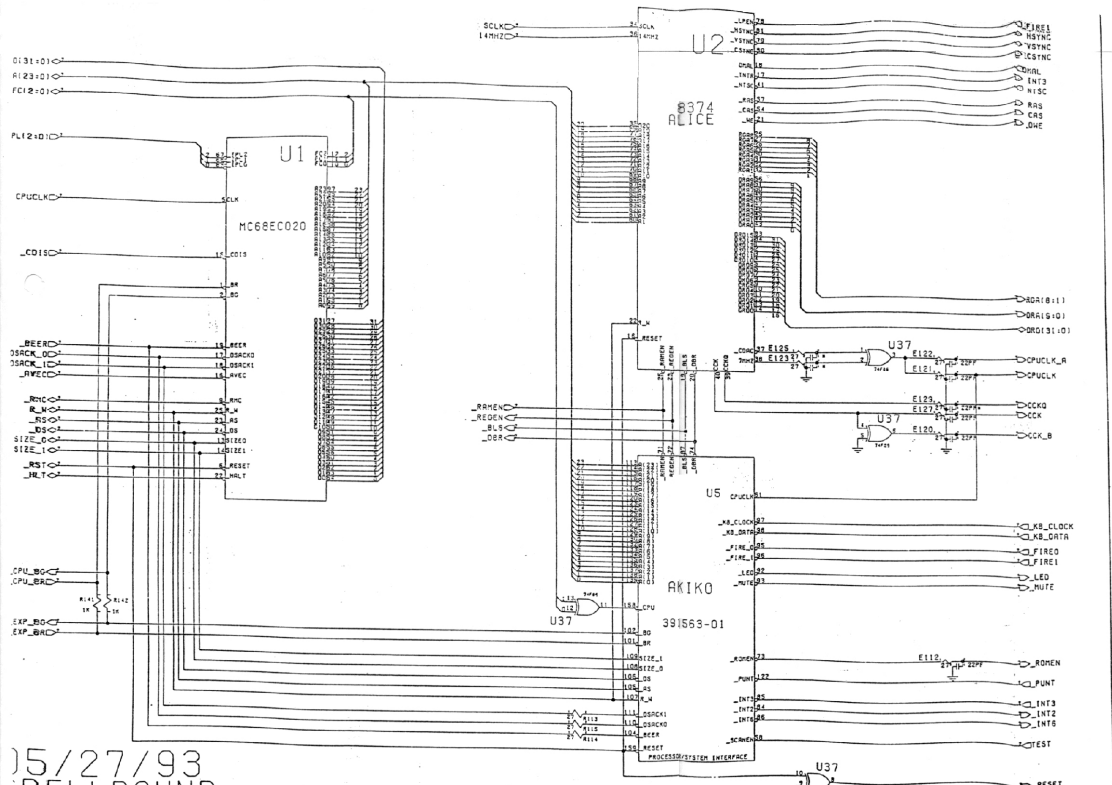


DECOUPLING



LITES & KNOBS





05/27/93
 PELLBOUND
 LOGS PLAYER PCB

NOTE: VARIOUS COMPONENTS ARE FOR EMI CONTROL
 AND MAY BE LOADED WITH FUNNY THINGS...

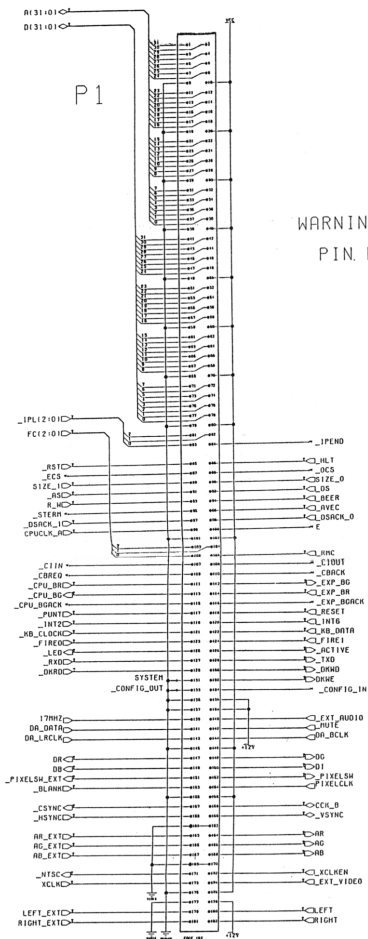
PROCESSOR AND OTHER USEFUL EQUIPMENT

4. This component is a registered trademark of Intel Corporation. All other trademarks are the property of their respective owners.

INTEL CORPORATION
 3065 BURNING WOOD DRIVE
 FOLSOM, CA 95630
 TEL: (916) 351-1000

4365100 01

EXPANSION CONNECTOR



WARNING:

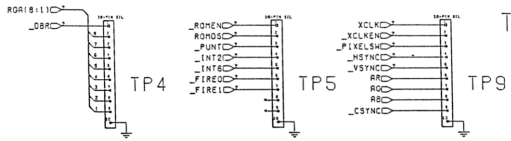
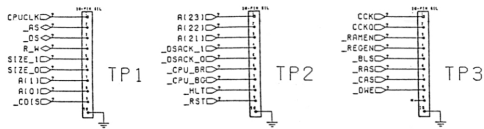
PIN NUMBERS ARE BACKWARDS

CD/GS PLAYER PCB

EXPANSION OR IS IT HIGHEST DESTINY?

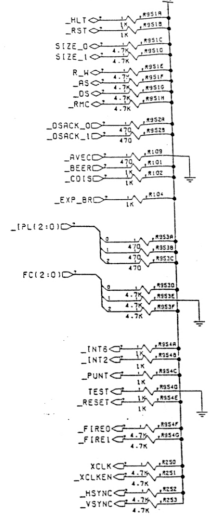
© 1988 KENNEDY ELECTRONIC COMPANY
 ALL RIGHTS RESERVED
 MADE IN THE U.S.A.

KENNEDY ELECTRONIC COMPANY
 1365 100th Ave. S.E.
 Everett, WA 98201
 (206) 365-1000

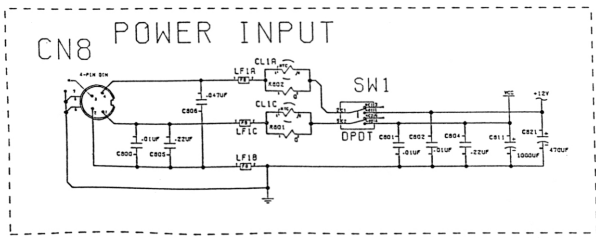
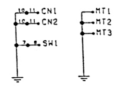


TEST ACCESS

TERMINATION



HOLES & C.



CD/GS PLAYER PCB

USER INTERFACE AND RELATED DEBO ENDS

© 1985 SAMSUNG ELECTRONICS CO., LTD. ALL RIGHTS RESERVED. THIS DOCUMENT IS UNCLASSIFIED.

13851007

